

Yesu Kilisto naani ?

Ami ne mulami a mikooko ebuwa: Na mulami ebuwa apanaa muwa waye bwa mikooko ...Mikooko yande ayipusha eyi dyande, n'ami neyishinguula, ayo namu ayindondo; n'ami neyipa muwa wa yikalayika, tayanafwe nya; na muntu tebya kwiyinyenga mu eyasa dyande. (Yoano 10:11,27,28).

Eshimba dyenu taditshinkishi-bwanga; anukumina Efile-Mukulu, kuminayi namu mwandji'mi. Mu shibo mwa Yaya, mwi shiko ibungi; su tamubadya kwikala byabya, nadya kwinulungula byanka, mwanda nende mu kwinulumbulwila mbalo, Yesu bamulungwile'shi: Ami n'eshinda, n'eyendo, na muwa; takwi muntu afiki kwi Yaya kushii kukiila kwandji'mi. Nenulekyela kufukama; nenupa kufukama kwande; ami ntanenupa bu abipeyeshena bena senga nya. Eshimba dyenu taditshinkishibwanga suunga kwikala na moo nya. (Yoano 14:1, 2, 27).

Fumu, twina lukalo lwa kumona Yesu. (Yoano 12:21)

Fumu Yesu akula'shi: Fikaayi kwandji anwe booso bakookye na basha mashito, n'ami, nankenupa kwikisha. Semunayi mushiyo wande, nuyiye kwandji; mwanda wandi na kwiyisha na kupopeela kwishimba; n'anwe anukapete kwikisha kwa bikudi byenu. Mwanda mushiyo wande ngupelepeele, na kiita kyande nkipelepeele. (Mateo 11:28-30).

Talanga, nemwimane pa kibelo na nakokola: su muntu apusha eyi dyande na ashitula kiibi, nakatwele mwaye na nakadi naye, naye akadi'nami, Simeone Mpyele bamwalulwile'shi: Mwanana, ankwini kwatudya kwenda? Wena mayi a muwa wa yikalayika; n'atwe, atukumina na atuuku'shi obe, we E-Selelee a Efile-Mukulu (Kileseso 3: 20, Yoano 6:68-69).

Bafudiibwe kifulo, bino bino twi bana b'Efile-Mukulu, na bya tukeekala tabyabandjile kuleshiibwa; atuwuku'shi pa kaleshibwa atukamwifwana, mwanda atukamumono byadi. Fumu Yesu akula'shi: Talanga, nafiki binobino, na nena bwedi bwande, mwanda wa kufuta muntu ooso muyile abikeekala mikitshino yaye. Ami, ne Alufa na Omega, a kwibedi na akunyima, mbangilo na fudiilo. (1 Yoano 3:2. Kileseso 22:12,13).

© C.E.R.S. - B.P. 1673 Kananga
République Démocratique Du Congo
Email: 33eme.cers.lit@gmail.com
<http://www.33eme-cers.org/>



Yesu Kilisto naani ?

Ami ne mulami a mikooko ebuwa: Na mulami ebuwa apanaa muwa waye bwa mikooko ...Mikooko yande ayipusha eyi dyande, n'ami neyishinguula, ayo namu ayindondo; n'ami neyipa muwa wa yikalayika, tayanafwe nya; na muntu tebya kwiyinyenga mu eyasa dyande. (Yoano 10:11,27,28).

Eshimba dyenu taditshinkishi-bwanga; anukumina Efile-Mukulu, kuminayi namu mwandji'mi. Mu shibo mwa Yaya, mwi shiko ibungi; su tamubadya kwikala byabya, nadya kwinulungula byanka, mwanda nende mu kwinulumbulwila mbalo, Yesu bamulungwile'shi: Ami n'eshinda, n'eyendo, na muwa; takwi muntu afiki kwi Yaya kushii kukiila kwandji'mi. Nenulekyela kufukama; nenupa kufukama kwande; ami ntanenupa bu abipeyeshena bena senga nya. Eshimba dyenu taditshinkishibwanga suunga kwikala na moo nya. (Yoano 14:1, 2, 27).

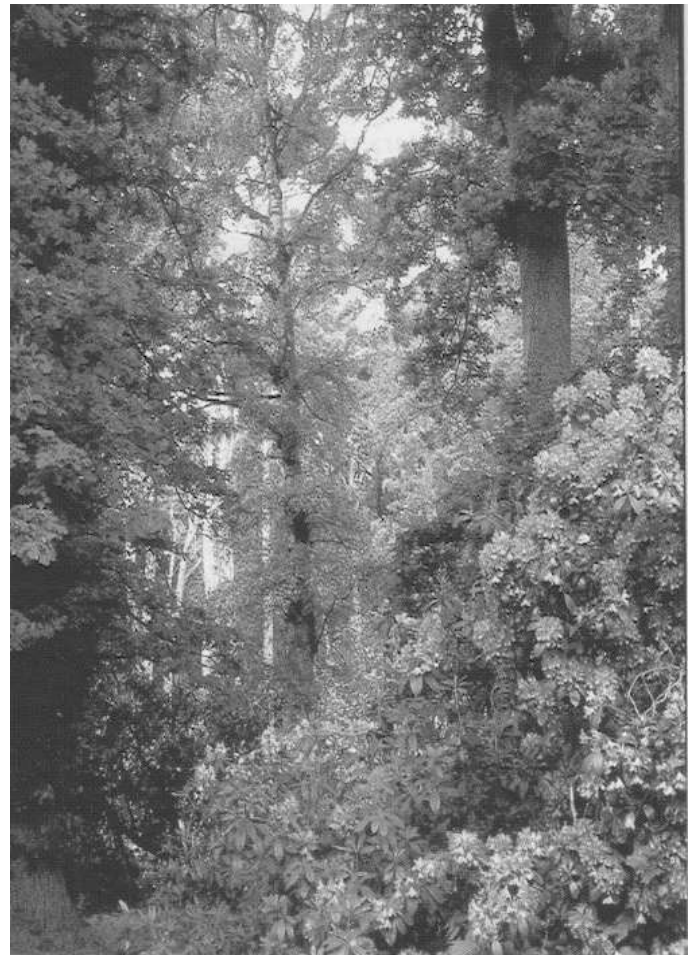
Fumu, twina lukalo lwa kumona Yesu. (Yoano 12:21)

Fumu Yesu akula'shi: Fikaayi kwandji anwe booso bakookye na basha mashito, n'ami, nankenupa kwikisha. Semunayi mushiyo wande, nuyiye kwandji; mwanda wandi na kwiyisha na kupopeela kwishimba; n'anwe anukapete kwikisha kwa bikudi byenu. Mwanda mushiyo wande ngupelepeele, na kiita kyande nkipelepeele. (Mateo 11:28-30).

Talanga, nemwimane pa kibelo na nakokola: su muntu apusha eyi dyande na ashitula kiibi, nakatwele mwaye na nakadi naye, naye akadi'nami, Simeone Mpyele bamwalulwile'shi: Mwanana, ankwini kwatudya kwenda? Wena mayi a muwa wa yikalayika; n'atwe, atukumina na atuuku'shi obe, we E-Selelee a Efile-Mukulu (Kileseso 3: 20, Yoano 6:68-69).

Bafudiibwe kifulo, bino bino twi bana b'Efile-Mukulu, na bya tukeekala tabyabandjile kuleshiibwa; atuwuku'shi pa kaleshibwa atukamwifwana, mwanda atukamumono byadi. Fumu Yesu akula'shi: Talanga, nafiki binobino, na nena bwedi bwande, mwanda wa kufuta muntu ooso muyile abikeekala mikitshino yaye. Ami, ne Alufa na Omega, a kwibedi na akunyima, mbangilo na fudiilo. (1 Yoano 3:2. Kileseso 22:12,13).

© C.E.R.S. - B.P. 1673 Kananga
République Démocratique Du Congo
Email: 33eme.cers.lit@gmail.com
<http://www.33eme-cers.org/>



Yesu Kilisto naani ?

Kufika kwa Fumu Yesu bekwakule kwi batemuki

Talanga, mukashi kamame akayimita, na akatanda mwana mulume, na akayitanyinibwa eshina dya bu, Emanwele, (kupatuula nkamba'shi, Efile-Mukulu e neetu)... Esayi 7:14).

Madiya ...na akatanda mwana mulume, n'obe onomuudikye eshina dyaye bu, Yesu, mwanda aye anapaashe mwilo waye ku milwiso yawo. (Mateo 1:18-22)

Kutala Fidipe baadi mwina Betesayida, mu kibalo kya Andele na Mpyele. Fidipe bamwene Natanaele na bamulungwile'shi: Tubamono yawa bafundjilwe mu Mwiya kwi Mose na bafundjilwe kwi batemuki Yesu mwana a Yosefe, mwina Nasaleta. (Yoano 1:45)

Na bafikile ku Nasaleta kubakushiswe; na batwelele mu kitumbwilo mwifuku dya Sabaato muyile kipikwa kyaye, na bebwele bwa kubadika. Na babamupeele mukanda wa mutemuki Esayi; na p'aye kufunguula mukanda, basangene kishingatshilo kifunde'shi: « Kikudi kya Mwanana ki panundu pande, mwanda bashingile mwimu mwanda wa kulungula mikandu yi buwa kwi balanda; bantumine bwa kwuukisha misungu kufungushibwa, na kwi bampofu kubuula kwa meeso; bwa kwalusha bulungantu kwi baaba bafinibwe, na kulungula kipwa ki buwa kya Mwanana ». Na bafungile mukanda na bewalwische kwi mulami, bashaleele; na meeso a booso babaadi mu kitumbwilo abaadi aatala paadi. Na babangile kwibalungula'shi: Leelo uno kino kifundwe kibalombana, pa'nwe kwikipusha. Na booso babatulanga bu kamoni pamwanda waye, na babakanyanga mayi a kalolo abatukanga mukanwa mwaye, na babambanga'shi: Uno tamwana a Yosefe su? (Luuka 4:16-22).

Bu muntu bwa Yesu

Kutala, Yesu pabafikile ku bipindji bya senga bya ku Sesalee a ku Fidipe, bayipwishe beeyi baaye'shi: A bantu abamba'shi nee'ni, ami mwana a muntu? Babamwalulwile'shi: Bangi bantu abamba'shi: Yoano Mubatsishishi; bangi'shi: Eliya; na bamo'shi: Yelemiya, suunga umune a ku batemuki. Bebalungwile'shi: Anwe namu, anwamba'shi nee'ni? Simeone Mpyele bamwalulwile'shi: Obe we Kilisto Mwana'Efile-Mukulu ena muwa. Na Yesu bamwalulwile'shi: we a mwabi, Simeone a

Yesu Kilisto naani ?

Kufika kwa Fumu Yesu bekwakule kwi batemuki

Talanga, mukashi kamame akayimita, na akatanda mwana mulume, na akayitanyinibwa eshina dya bu, Emanwele, (kupatuula nkamba'shi, Efile-Mukulu e neetu)... Esayi 7:14).

Madiya ...na akatanda mwana mulume, n'obe onomuudikye eshina dyaye bu, Yesu, mwanda aye anapaashe mwilo waye ku milwiso yawo. (Mateo 1:18-22)

Kutala Fidipe baadi mwina Betesayida, mu kibalo kya Andele na Mpyele. Fidipe bamwene Natanaele na bamulungwile'shi: Tubamono yawa bafundjilwe mu Mwiya kwi Mose na bafundjilwe kwi batemuki Yesu mwana a Yosefe, mwina Nasaleta. (Yoano 1:45)

Na bafikile ku Nasaleta kubakushiswe; na batwelele mu kitumbwilo mwifuku dya Sabaato muyile kipikwa kyaye, na bebwele bwa kubadika. Na babamupeele mukanda wa mutemuki Esayi; na p'aye kufunguula mukanda, basangene kishingatshilo kifunde'shi: « Kikudi kya Mwanana ki panundu pande, mwanda bashingile mwimu mwanda wa kulungula mikandu yi buwa kwi balanda; bantumine bwa kwuukisha misungu kufungushibwa, na kwi bampofu kubuula kwa meeso; bwa kwalusha bulungantu kwi baaba bafinibwe, na kulungula kipwa ki buwa kya Mwanana ». Na bafungile mukanda na bewalwische kwi mulami, bashaleele; na meeso a booso babaadi mu kitumbwilo abaadi aatala paadi. Na babangile kwibalungula'shi: Leelo uno kino kifundwe kibalombana, pa'nwe kwikipusha. Na booso babatulanga bu kamoni pamwanda waye, na babakanyanga mayi a kalolo abatukanga mukanwa mwaye, na babambanga'shi: Uno tamwana a Yosefe su? (Luuka 4:16-22).

Bu muntu bwa Yesu

Kutala, Yesu pabafikile ku bipindji bya senga bya ku Sesalee a ku Fidipe, bayipwishe beeyi baaye'shi: A bantu abamba'shi nee'ni, ami mwana a muntu? Babamwalulwile'shi: Bangi bantu abamba'shi: Yoano Mubatsishishi; bangi'shi: Eliya; na bamo'shi: Yelemiya, suunga umune a ku batemuki. Bebalungwile'shi: Anwe namu, anwamba'shi nee'ni? Simeone Mpyele bamwalulwile'shi: Obe we Kilisto Mwana'Efile-Mukulu ena muwa. Na Yesu bamwalulwile'shi: we a mwabi, Simeone a

Yona, mwanda musamba na mase tambikufumbwile [byabya], anka Shaami e mu mawulu. (Mateo 16:13-17).

Mwanudi mwikale kyakya kinangu kibadi munda mwa Kilisto Yesu, aye baadi efwanika di'EfileMukulu, tamutale bu kintu kya kunyenga bwa kwikala mu lutshi lumune n'Efile-Mukulu nya, Anka beyishishe aye nabeene, na kwata efwanika dya bu mpika, batshile efwanika dya bu muntu; Na, basangenwe na nkyebukilo ya bu muntu, beyishishe aye nabeene pakukookyela mpaa na ku lufu, na ku lufu lwa ku nkuluse. Ngi bwa kini Efile-Mukulu bamukamishe bikile na bamupeele eshina di kunundu kwa mashina ooso, bwa'shi mwishina dya Yesu enwi dyoso dimukunamine dya kipangwa kya mwiwulu, na kya pa senga, na kya muushi mwa senga, na shi edimi dyoso dyakule'shi Yesu Kilisto Fumu, ku ntumbo y'Efile-Mukulu Yaya. (Bena Fidipi 2:5-11).

Mufubo wa Yesu

Na batwelele mu Yediko, na basambukile [kibalo]. Na talanga, muntu, ayitanyinibwa'shi Sakayo: Na baadi mukata a bawudishi ba bitadi, na baadi mpeta; na bakimbanga bya kumona Yesu, byaadi; na tabaadi byakwibikita, mwanda wa kibumbu, mwanda'shi baadi kishiisa kiipi. Na bayiile kumpala lubilo, bakamine ku mutshi wa sikomole'shi amumone; mwanda baadi na kyakukidila paapa. Na pabafikile pa yaya mbalo, Yesu bebosheshe meeso, bamumwene, na bamulungwile'shi: Sakayo, yika bukidi; mwanda abintungu kushaala leelo mu shibo yobe. Na bayikile bukidi, na bamutambwile na muloo. Na pababebimwene, booso babaadi abawunawuna'shi batwele kwa mukitshi a bubi mu kushaala. Na Sakayo, bayimeene paapa, alungula Fumu'shi: Talanga, Fumu, naapa balanda kyapankatshi kya mapeta ande; na su nemulwisheshe muntu mu kumudimbiila, namwalwisha binanka. Na Yesu bamwambile'shi: Leelo kipandjilo kibafiki mu yino shibo, pakumona'shi aye namu'ni mwana a Abalahama; mwanda mwana a muntu mufukye mu kukimba na kupaasha kyakya kibaadi kishimine. pamune na mwana a muntu ta mufukye bwa kufubulwa, anka kufubula bantu na kupaana muwa waye bu nkuulo ya bebungi. (Luuka 19:1-10, Mateo 20:28).

Mukandu wi buwa wa Yesu

Fumu Yesu akula'shi: Ne mufukye pa senga bu etaata, bwa'shi yawa oso akumiina mwandji tashaala mu mufito. (Yoano 12:46).

Yona, mwanda musamba na mase tambikufumbwile [byabya], anka Shaami e mu mawulu. (Mateo 16:13-17).

Mwanudi mwikale kyakya kinangu kibadi munda mwa Kilisto Yesu, aye baadi efwanika di'EfileMukulu, tamutale bu kintu kya kunyenga bwa kwikala mu lutshi lumune n'Efile-Mukulu nya, Anka beyishishe aye nabeene, na kwata efwanika dya bu mpika, batshile efwanika dya bu muntu; Na, basangenwe na nkyebukilo ya bu muntu, beyishishe aye nabeene pakukookyela mpaa na ku lufu, na ku lufu lwa ku nkuluse. Ngi bwa kini Efile-Mukulu bamukamishe bikile na bamupeele eshina di kunundu kwa mashina ooso, bwa'shi mwishina dya Yesu enwi dyoso dimukunamine dya kipangwa kya mwiwulu, na kya pa senga, na kya muushi mwa senga, na shi edimi dyoso dyakule'shi Yesu Kilisto Fumu, ku ntumbo y'Efile-Mukulu Yaya. (Bena Fidipi 2:5-11).

Mufubo wa Yesu

Na batwelele mu Yediko, na basambukile [kibalo]. Na talanga, muntu, ayitanyinibwa'shi Sakayo: Na baadi mukata a bawudishi ba bitadi, na baadi mpeta; na bakimbanga bya kumona Yesu, byaadi; na tabaadi byakwibikita, mwanda wa kibumbu, mwanda'shi baadi kishiisa kiipi. Na bayiile kumpala lubilo, bakamine ku mutshi wa sikomole'shi amumone; mwanda baadi na kyakukidila paapa. Na pabafikile pa yaya mbalo, Yesu bebosheshe meeso, bamumwene, na bamulungwile'shi: Sakayo, yika bukidi; mwanda abintungu kushaala leelo mu shibo yobe. Na bayikile bukidi, na bamutambwile na muloo. Na pababebimwene, booso babaadi abawunawuna'shi batwele kwa mukitshi a bubi mu kushaala. Na Sakayo, bayimeene paapa, alungula Fumu'shi: Talanga, Fumu, naapa balanda kyapankatshi kya mapeta ande; na su nemulwisheshe muntu mu kumudimbiila, namwalwisha binanka. Na Yesu bamwambile'shi: Leelo kipandjilo kibafiki mu yino shibo, pakumona'shi aye namu'ni mwana a Abalahama; mwanda mwana a muntu mufukye mu kukimba na kupaasha kyakya kibaadi kishimine. pamune na mwana a muntu ta mufukye bwa kufubulwa, anka kufubula bantu na kupaana muwa waye bu nkuulo ya bebungi. (Luuka 19:1-10, Mateo 20:28).

Mukandu wi buwa wa Yesu

Fumu Yesu akula'shi: Ne mufukye pa senga bu etaata, bwa'shi yawa oso akumiina mwandji tashaala mu mufito. (Yoano 12:46).