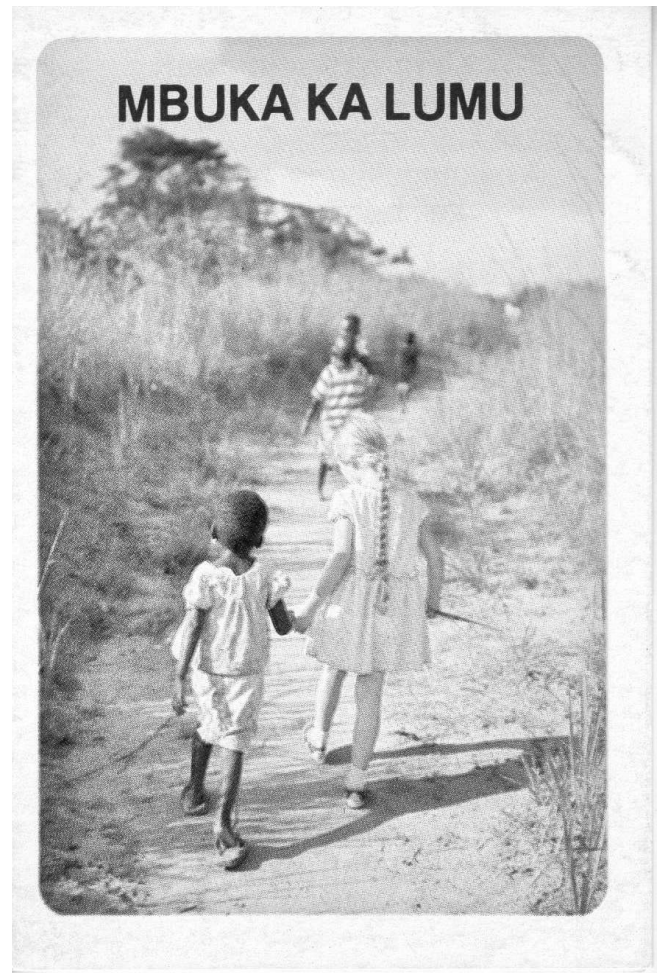


Ekamaki Latuyalaka
l'utema aye tshe,
tekamaki yimba yaye hita.
Uwetawoki lu akambu aye tshe,
ku ndi ayukolongoswela
mbuka yaye.
Tukedi 3:5,6

Ku we ayokendakenda
la ki lu mbuka kaye la
lukulu laye halutakana,
lam'ayuyetama, we huka woma,
Ee, we ayetama,
ku djo yaye yayuyala ololo utu.
Tukedi 3 :23,24

© C.E.R.S. - B.P. 1673 Kananga
République Démocratique Du Congo
Email: 33eme.cers.lit@gmail.com

<http://www.33eme-cers.org/>

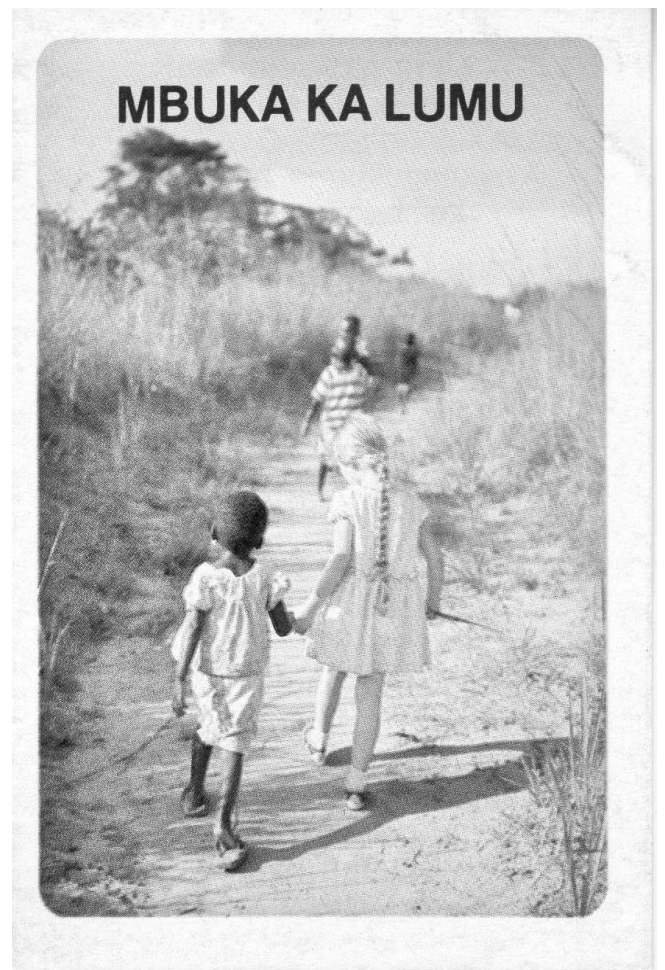


Ekamaki Latuyalaka
l'utema aye tshe,
tekamaki yimba yaye hita.
Uwetawoki lu akambu aye tshe,
ku ndi ayukolongoswela
mbuka yaye.
Tukedi 3:5,6

Ku we ayokendakenda
la ki lu mbuka kaye la
lukulu laye halutakana,
lam'ayuyetama, we huka woma,
Ee, we ayetama,
ku djo yaye yayuyala ololo utu.
Tukedi 3 :23,24

© C.E.R.S. - B.P. 1673 Kananga
République Démocratique Du Congo
Email: 33eme.cers.lit@gmail.com

<http://www.33eme-cers.org/>



Khumadiondjo Jesu
akawatela ntu ati, Yanyi ya
wa la kete mbemi. One landjela,
hakendakenda lu udjima,
keli ndi ayuyala la
yanyi ya lumu.
Joani 8:12

Dimi leli mbuka,
mete la lumu.
Nduku untu laya le Papa,
tshikima uma le mi.
Joani 14:6

We ayomenyaka mbuka ka lumu, engenongeno
wa mamba weko
la ntundu kaye;
engenongeno wa pundju
weko lu lunya laye la pami.
Esambu 16:11
Mbuka kemotshi kateneka
ololo lu ashu w'antu,
keli ekumelu kato eli nyoi.
Tukedi 14:12

Khumadiondjo Jesu
akawatela ntu ati, Yanyi ya
wa la kete mbemi. One landjela,
hakendakenda lu udjima,
keli ndi ayuyala la
yanyi ya lumu.
Joani 8:12

Dimi leli mbuka,
mete la lumu.
Nduku untu laya le Papa,
tshikima uma le mi.
Joani 14:6

We ayomenyaka mbuka ka lumu, engenongeno
wa mamba weko
la ntundu kaye;
engenongeno wa pundju
weko lu lunya laye la pami.
Esambu 16:11
Mbuka kemotshi kateneka
ololo lu ashu w'antu,
keli ekumelu kato eli nyoi.
Tukedi 14:12

Umbukia ngandji kaye
ka mamba k'olomo,
ne dia leye katumekamaka.
Unimbitshiya mbuka
ka dimi nkendakenda,
ne dia dimi latediaka utema
ami utsha le ye.
Esambu 143:8

Diui diaye dieko tala
l'ekulu ami,
ndu usasi lu mbuka kami.
Esambu 119:105

Nzambi
ayutetsha mbuka yandi,
mbayuteya nkendakenda
lu tuwuka tandi.
Mika 4:2

Umbukia ngandji kaye
ka mamba k'olomo,
ne dia leye katumekamaka.
Unimbitshiya mbuka
ka dimi nkendakenda,
ne dia dimi latediaka utema
ami utsha le ye.
Esambu 143:8

Diui diaye dieko tala
l'ekulu ami,
ndu usasi lu mbuka kami.
Esambu 119:105

Nzambi
ayutetsha mbuka yandi,
mbayuteya nkendakenda
lu tuwuka tandi.
Mika 4:2
