

wakamuambila ne, Bu mudi Yehowa ne muoyo, undi ngimana kumpala kuandi, tshiena mua kukuangata. Yeye wakamu-sengelela, kadi yeye wakabenga. Namana wakamba ne, Biwabenga, ndi nkusengelela ne, Bape muntu webe maloba bu majitu adi mpunda ibidi mua kuambula, bualu bua muntu webe kena ufila mulambu kudi nzambi mukuabo, anu kudi Yehowa.”

(2 Bakelenge 5:15-17)

Bualu bua lumu luimpe lua lupandu luetu

Lupandu ne kulengesha kua mutshima bidi bipeshibua bantu tshianana kudi Nzambi. Mukanda wa Nzambi udi wamba ne, “Nudi basungidibue ku ngasa bua ditabuja; ne diodi kadiena difuma kunudi, ndipa dia Nzambi; kadiena difuma ku midimu, bua muntu kaditumbishi” (Efeso 2:8,9). “Biwajukula ne mukana muebe ne, Yesu udi Mukelenge, ne biwitabuja mu mutshima webe ne, Nzambi wakamubisha ku bafue, neusungidibue. Bualu bua bantu badi bitabuja ne mutshima bua kupeta buakane, badi baju-kula ne mukana bua kupeta lupandu. Mukanda wa Nzambi udi wamba ne, Wamuitabuja kena ufuishibua bundu.”

(Lomo 10:9-11)

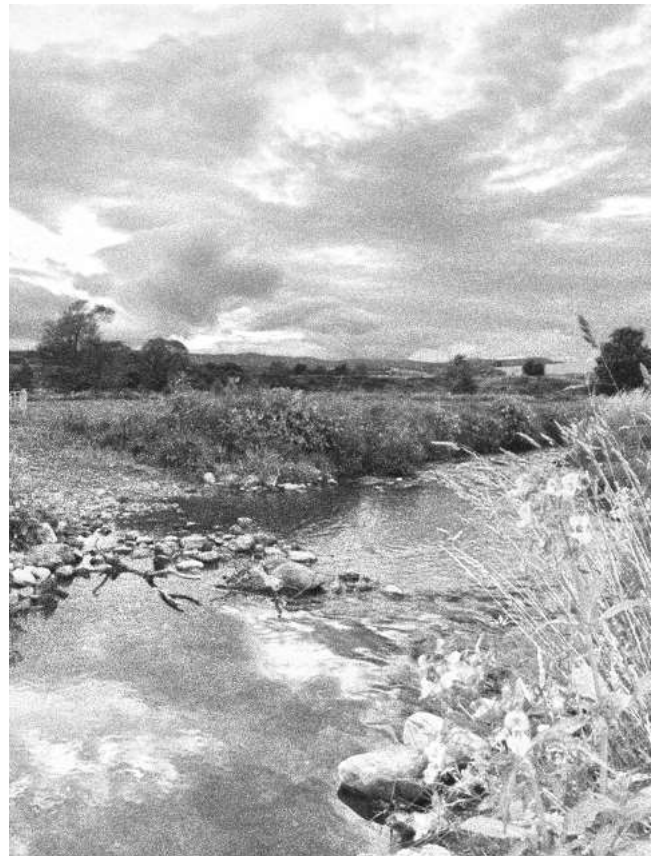
“Ya biebe Talala

Namana wakamanya ne, Nzambi wakungondapa. Udi ujingulula ne, Luendu lua ditabuja kaluena lutekete, kadi Nzambi udi mumanye mua kunkuatshisha. Meyi a Elisha ne, “Ya biebe talalaa”, akadi meyi a busambi ku mutshima wende. Katataka udi ne ditalala ne Nzambi – udi mumanye Nzambi wa ditalala, “Tatu wa luse ne Nzambi wa busambi buonso.”

(2 Kolinto 1:3)

© C.E.R.S. - B.P. 1673 Kananga
République Démocratique Du Congo
Email: 33eme.cers.lit@gmail.com
<http://www.33eme-cers.org/>

Nsongakaji Mukese wa Bena Isalele Mupika wa Bantu ba Bende



wakamuambila ne, Bu mudi Yehowa ne muoyo, undi ngimana kumpala kuandi, tshiena mua kukuangata. Yeye wakamu-sengelela, kadi yeye wakabenga. Namana wakamba ne, Biwabenga, ndi nkusengelela ne, Bape muntu webe maloba bu majitu adi mpunda ibidi mua kuambula, bualu bua muntu webe kena ufila mulambu kudi nzambi mukuabo, anu kudi Yehowa.”

(2 Bakelenge 5:15-17)

Bualu bua lumu luimpe lua lupandu luetu

Lupandu ne kulengesha kua mutshima bidi bipeshibua bantu tshianana kudi Nzambi. Mukanda wa Nzambi udi wamba ne, “Nudi basungidibue ku ngasa bua ditabuja; ne diodi kadiena difuma kunudi, ndipa dia Nzambi; kadiena difuma ku midimu, bua muntu kaditumbishi” (Efeso 2:8,9). “Biwajukula ne mukana muebe ne, Yesu udi Mukelenge, ne biwitabuja mu mutshima webe ne, Nzambi wakamubisha ku bafue, neusungidibue. Bualu bua bantu badi bitabuja ne mutshima bua kupeta buakane, badi baju-kula ne mukana bua kupeta lupandu. Mukanda wa Nzambi udi wamba ne, Wamuitabuja kena ufuishibua bundu.”

(Lomo 10:9-11)

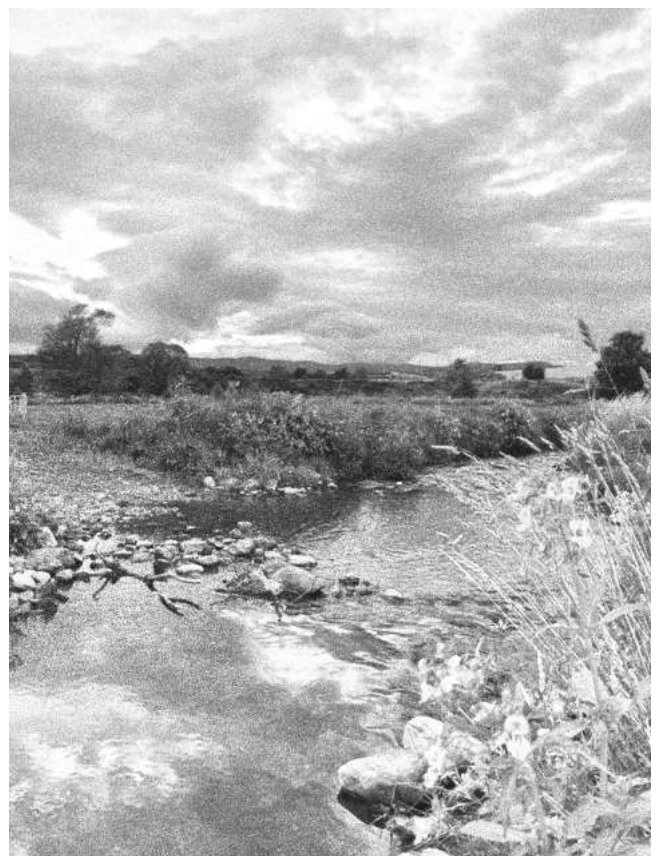
“Ya biebe Talala

Namana wakamanya ne, Nzambi wakungondapa. Udi ujingulula ne, Luendu lua ditabuja kaluena lutekete, kadi Nzambi udi mumanye mua kunkuatshisha. Meyi a Elisha ne, “Ya biebe talalaa”, akadi meyi a busambi ku mutshima wende. Katataka udi ne ditalala ne Nzambi – udi mumanye Nzambi wa ditalala, “Tatu wa luse ne Nzambi wa busambi buonso.”

(2 Kolinto 1:3)

© C.E.R.S. - B.P. 1673 Kananga
République Démocratique Du Congo
Email: 33eme.cers.lit@gmail.com
<http://www.33eme-cers.org/>

Nsongakaji Mukese wa Bena Isalele Mupika wa Bantu ba Bende



Nsongakaji Mukese wa Bena Isalele Mupika wa Bantu ba Bende

Nsongakaji mukese wakadi muena Isalele, mukuatshibue kudi basalayi ba Bena Sulia. Mfumu wandi mukaji wakadi mukaji wa muntu munene, dina diandi ne, Namana. Namana wakadi kapitene ka masalayi a mukelenge wa Bena Sulia. Yeye wakadi muntu wa butumbi kadi wakadi muena nsudi. Katuena bamanye dina dia nsongakaji kadi yeye wakadi ne bumanyishi buimpe bu muena mudimu wa Nzambi mu nzubu wa bantu ba bende. Pakambileye mfumu wandi mukaji bualu bua muprofete mu Samalea ne bu yeye wakadi mumanye mua kuondapa disama diandi dia nsudi, mfumu wandi mukaji wakitabuja diyi diandi! (2 Bakelenge 5:1-4)

Namana udi ulua kudi Elisha

“Nunku Namana wakalua ne tubalu tuandi ne makalu andi, wakimana ku mbelu kua nzubu wa Elisha. Elisha wakatuma messenger wandi kudiye ne, Ya, wowe mayi mu Yadene misangu muanda mutekete, musunyi webe neulue kuudi kabidi; wewe newikale muakane. Kadi Namana wakadi ne tshiji, wakasunuka, wakamba ne, Nakuelangana meji ne, Bulelela, yeye neapatuke kundi, neimane, neabikile dina dia Yehowa, Nzambi wandi, nealenge tshianza tshiandi pa muaba udi usama, neangondape nsudi. Abana ne Papa, misulu ya mu Damaseke, kayena mipite mayi onso a mu Isalele buakane, anyi? Tshiena mumanye mua kuowamu mayi, ngikale muakane, anyi? Wakasunuka ne tshiji tshikole. Pashishe bantu bandi bakasemena pa buipi nandi, bakamukonka ne, Tatu wetu, bu muprofete mukuambile bua wewe kuenza bualu bunene kuakadi kubuenza, anyi? Bualu budi butamba kukutonda muakambeye ne, Wowe mayi, wikale muakane, munyi? Pashishe wakapuuka, wakadina mu mayi a Yadene misangu muanda mutekete bu muakadi diyi dia muntu wa Nzambi; musunyi wakapingana bu wa muana mukese, wakadi muakane.” (2 Bakelenge 5:9-14)

Nsongakaji Mukese wa Bena Isalele Mupika wa Bantu ba Bende

Nsongakaji mukese wakadi muena Isalele, mukuatshibue kudi basalayi ba Bena Sulia. Mfumu wandi mukaji wakadi mukaji wa muntu munene, dina diandi ne, Namana. Namana wakadi kapitene ka masalayi a mukelenge wa Bena Sulia. Yeye wakadi muntu wa butumbi kadi wakadi muena nsudi. Katuena bamanye dina dia nsongakaji kadi yeye wakadi ne bumanyishi buimpe bu muena mudimu wa Nzambi mu nzubu wa bantu ba bende. Pakambileye mfumu wandi mukaji bualu bua muprofete mu Samalea ne bu yeye wakadi mumanye mua kuondapa disama diandi dia nsudi, mfumu wandi mukaji wakitabuja diyi diandi! (2 Bakelenge 5:1-4)

Namana udi ulua kudi Elisha

“Nunku Namana wakalua ne tubalu tuandi ne makalu andi, wakimana ku mbelu kua nzubu wa Elisha. Elisha wakatuma messenger wandi kudiye ne, Ya, wowe mayi mu Yadene misangu muanda mutekete, musunyi webe neulue kuudi kabidi; wewe newikale muakane. Kadi Namana wakadi ne tshiji, wakasunuka, wakamba ne, Nakuelangana meji ne, Bulelela, yeye neapatuke kundi, neimane, neabikile dina dia Yehowa, Nzambi wandi, nealenge tshianza tshiandi pa muaba udi usama, neangondape nsudi. Abana ne Papa, misulu ya mu Damaseke, kayena mipite mayi onso a mu Isalele buakane, anyi? Tshiena mumanye mua kuowamu mayi, ngikale muakane, anyi? Wakasunuka ne tshiji tshikole. Pashishe bantu bandi bakasemena pa buipi nandi, bakamukonka ne, Tatu wetu, bu muprofete mukuambile bua wewe kuenza bualu bunene kuakadi kubuenza, anyi? Bualu budi butamba kukutonda muakambeye ne, Wowe mayi, wikale muakane, munyi? Pashishe wakapuuka, wakadina mu mayi a Yadene misangu muanda mutekete bu muakadi diyi dia muntu wa Nzambi; musunyi wakapingana bu wa muana mukese, wakadi muakane.” (2 Bakelenge 5:9-14)

Diambedi Namana udi upetula mayi a musulu wa Yadene

Pakamba Elisha ne, Ya, wowe mayi mu Yadene, Namana wakasunuka ne tshiji tshikole. Yeye wakamba ne, “Abana ne Papa, misulu ya mu Damaseke, kayena mipite mayi onso a mu Isalele buakane, anyi?” Lelu bantu ba bungi bapidia njila wa lupandu wa Nzambi. Mukanda wa Nzambi udi wamba ne, “Kuamba bua mutshi mutshiamakane kudi bualu bupote kudi bantu batshidi bajimina; kadi kudi bukole bua Nzambi kudi tuetu batshidi basungidibua” (1 Kolinto 1:18). Lelu buanga budika bua kuondapa nsudi, kadi kale kuikala ne nsudi kuakadi bualu bukole be. Malu mabi mu mioyo yetu adi bualu bukole be ku mesu kua Nzambi kabidi. Mukanda wa Nzambi udi wamba ne, “Difutu dia bubi ndufu, kadi dipa dia luse dia Nzambi mmuoyo wa tshiendelele mu Kilisto Yesu Mukelenge wetu.” (Lomo 6:23)

Bena mudimu ba Namana badi bamupesha lungengyi lulelela

Namana wakitabuja diyi dia bena mudimu bandi. Yeye wakadipuekesha. Mukenji wa Lumu luimpe ludi ne, “Kudimunayi mitshima yenu, nuitabuje lumu luimpe” (Mako 1:15). Pashishe wakapuuka, wakadina mu mayi a Yadene misangu muanda mutekete bu muakadi diyi dia muntu wa Nzambi; musunyi wakapingana bu wa muana mukese, wakadi muakane. Mukelenge Davidi wakalomba ne, “Nzambi, unfuile luse, bu mudi luse luebe lujalame; ku divulgana dia luse luebe, unjimishile matomboka anyi. Unguvuwe tshishiki ku mapambuka anyi, untokeshe ku bubi buanyi ... unguvuwe, nempite neige butoke too.” (Musambu 51:1,2,7)

Elisha kena witabuja dipa kudi Namana

“Nunku [Namana] wakapingana kudi muntu wa Nzambi, yeye ne tshisumbu tshiandi tshionso, bakimana kumpala kuandi; wakamuambila ne, Katataka ndi mumanye ne, Kakuena Nzambi mukuabo pa buloba buonso anu mu Isalele; nunku ndi nkusengelela ne, Wangate kupa kudi muntu webe. Kadi Elisha

Diambedi Namana udi upetula mayi a musulu wa Yadene

Pakamba Elisha ne, Ya, wowe mayi mu Yadene, Namana wakasunuka ne tshiji tshikole. Yeye wakamba ne, “Abana ne Papa, misulu ya mu Damaseke, kayena mipite mayi onso a mu Isalele buakane, anyi?” Lelu bantu ba bungi bapidia njila wa lupandu wa Nzambi. Mukanda wa Nzambi udi wamba ne, “Kuamba bua mutshi mutshiamakane kudi bualu bupote kudi bantu batshidi bajimina; kadi kudi bukole bua Nzambi kudi tuetu batshidi basungidibua” (1 Kolinto 1:18). Lelu buanga budika bua kuondapa nsudi, kadi kale kuikala ne nsudi kuakadi bualu bukole be. Malu mabi mu mioyo yetu adi bualu bukole be ku mesu kua Nzambi kabidi. Mukanda wa Nzambi udi wamba ne, “Difutu dia bubi ndufu, kadi dipa dia luse dia Nzambi mmuoyo wa tshiendelele mu Kilisto Yesu Mukelenge wetu.” (Lomo 6:23)

Bena mudimu ba Namana badi bamupesha lungengyi lulelela

Namana wakitabuja diyi dia bena mudimu bandi. Yeye wakadipuekesha. Mukenji wa Lumu luimpe ludi ne, “Kudimunayi mitshima yenu, nuitabuje lumu luimpe” (Mako 1:15). Pashishe wakapuuka, wakadina mu mayi a Yadene misangu muanda mutekete bu muakadi diyi dia muntu wa Nzambi; musunyi wakapingana bu wa muana mukese, wakadi muakane. Mukelenge Davidi wakalomba ne, “Nzambi, unfuile luse, bu mudi luse luebe lujalame; ku divulgana dia luse luebe, unjimishile matomboka anyi. Unguvuwe tshishiki ku mapambuka anyi, untokeshe ku bubi buanyi ... unguvuwe, nempite neige butoke too.” (Musambu 51:1,2,7)

Elisha kena witabuja dipa kudi Namana

“Nunku [Namana] wakapingana kudi muntu wa Nzambi, yeye ne tshisumbu tshiandi tshionso, bakimana kumpala kuandi; wakamuambila ne, Katataka ndi mumanye ne, Kakuena Nzambi mukuabo pa buloba buonso anu mu Isalele; nunku ndi nkusengelela ne, Wangate kupa kudi muntu webe. Kadi Elisha