

bikondo bia bupote buabo patupu, kadi katataka yeye udi wela mukenshi ne, Bantu bonso badi kuonso bakudimune mitshima yabo; bua yeye wakasungula dituku didiye ulumbuluisha ba pa buloba mu buakane kudi muntu wakasunguleye. Yeye kabidi wakapa bantu bonso ditabusha dia bualu ebu, bua yeye wakamubisha ku lufu. Pakunvuabo bua dibika dia bafue, bakuabo bakaseka; kadi banga bakamba ne, Netunvue diyi diebe kabidi bua bualu ebu. Pashishe, Paulo wakumuka munkatshi muabo. Kadi banga balume bakamulamata, bakitabusha; munkatshi muabo kabidi muakadi Dionusio, muena Aleopago, ne mukashi, dina diandi Damali, ne bakuabo nabo.” (Bienzedi 17:18-34)

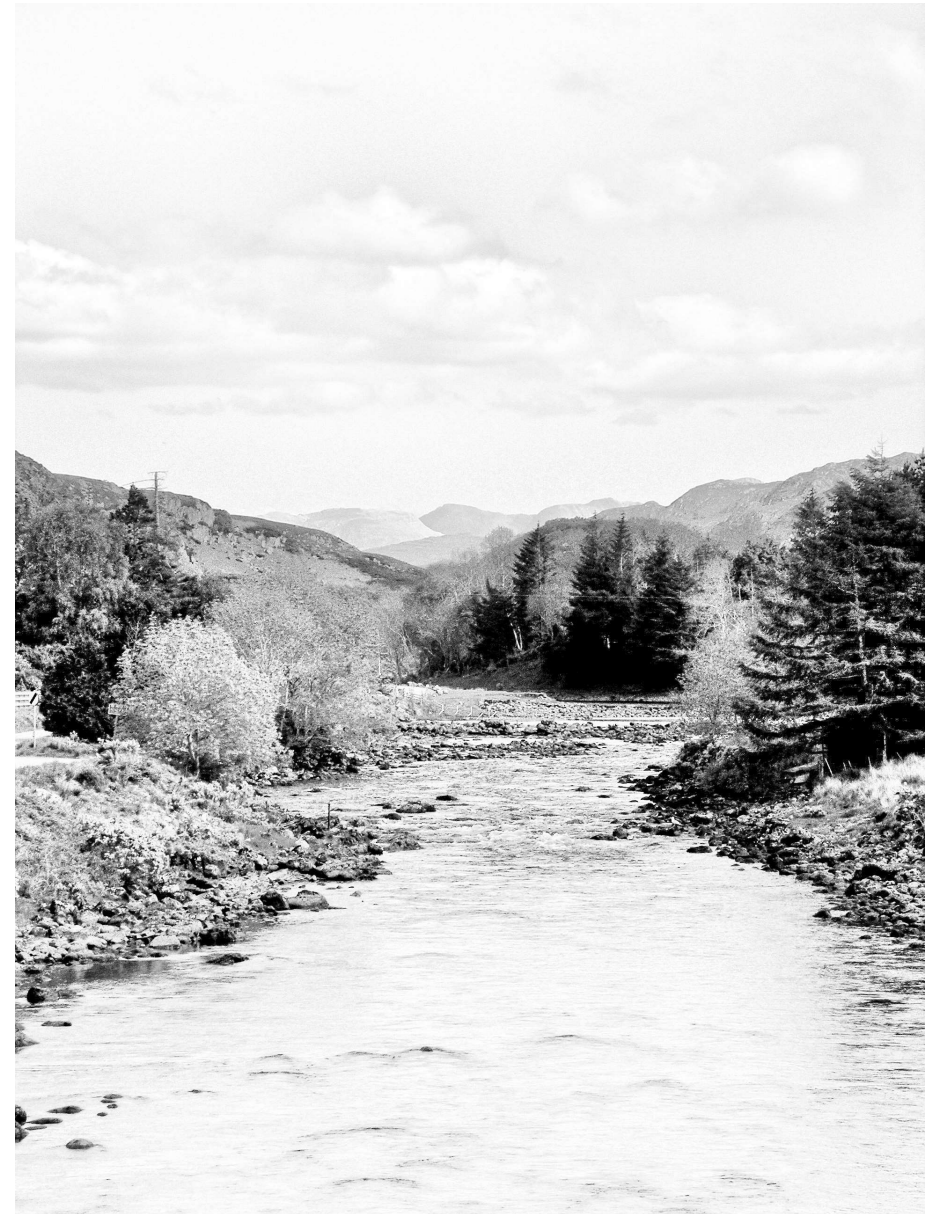
Tuikale bu Dionusio ne Damali

Bu mu matuku a kale, bakuabo badi baseka paumvuabo bualu bua Lumu Luimpe kadi bakuabo badi bitabuja bu Dionusio ne Damali. “Tuetu benji ba mudimu ne Nzambi, tudi tunusengelela kabidi ne, Kanuangatshi ngasa wa Nzambi bu bualu bua patupu; bua yeye udi wamba ne, Nakakunvuila mu tshikondo tshimpe, mu dituku dia lupandu nakukukuatshisha; monayi, katataka ntshikondo tshimpe, monayi, katataka ndituku dia lupandu.” (2 Kolinto 6:1,2)

Lelu Mukelenge Yesu udi wamba ne, “Luayi kundi, bonso badi ne mudimu mukole, badi ne bujitu bunene, meme nenupe dikisha. Angatayi mutshi wanyi wa tshikokedi pa nshingu yenu, nuyile malu kundi; bualu bua meme ndi ne kalolo ne kanemu mu mutshima wanyi; nunku nenusangane dikisha mu mitshima yenu. Bualu bua mutshi wanyi wa tshikokedi udi muakane ne bujitu buanyi budi bupepele.” (Matayo 11:28-30)

© C.E.R.S. - B.P. 1673 Kananga
République Démocratique Du Congo
Email: 33eme.cers.lit@gmail.com
<http://www.33eme-cers.org/>

Bukole ne Lungenyi bia Nzambi



Bukole ne Lungenyi bia Nzambi

“Nzambi nyeye wakafuka buloba ku bukole buandi, waka-jadika bia pa buloba ku lungenyi luandi, wakavungula diulu ku meji andi.”
(Yelemiya 10:12)

“Diulu didi diamba butumbi bua Nzambi; bia mu diulu bibaluluke bidi bimuenesha midimu ya bianza biandi. Udi ujadika bungi bua mitoto, udi uyibikila buonso buayi ku mena ayi.”
(Musambu 19:1.147:4)

“Ku mesu kuetu Nzambi umue udiku, Tatu mene; bintu bionso biakufuma kudiye, ne tuetu tudiku bua bualu buandi; ne Mukelenge umue, Yesu Kilisto, bintu bionso mbua bualu buandi ne tuetu tudi bua bualu buandi kabidi. Kadi lungenyi elu kaluena munda mua bantu bonso; kadi bakuabo bakadi ne tshilele tshia kutendelela mpingu too ne katataka.”
(1 Kolinto 8:6,7)

“Tangilayi, mioyo ya bantu bonso nyanyi; bu mudi muoyo wa tatu nguanyi, nunku muoyo wa muanandi wa balume nguanyi kabidi; muntu udi wenza bualu bubu, yeye muine neafue.”
(Yehezkele 18:4)

“Bonso bakenza malu mabi, ne badi bapanga kupeta butumbi kudi Nzambi.” (Lomo 3:23)

Kadi tudi ne lumu luimpe! Nzambi wakatuenzela njila wa kupandukila. “Bualu bua Nzambi wakatamba kusua ba pa buloba, yeye wakabapa Muanandi umuepele mulela bua muntu yonso wamuitabuja kafu biandi, kadi ikale ne muoyo wa tshiendelele. Nzambi kakatuma Muana wandi pa buloba bua kulumbuisha ba pa buloba, kadi bua ba pa buloba basungidibue kudiye. Kabena balumbuisha wamuitabuja, kadi bakuamana kulumbuisha wapidia kuitabuja, bualu bua kakitabuja dina dia Muana umuepele mulela wa Nzambi. Udi witabuja Muana udi ne muoyo wa tshiendelele.”
(Yone 3:16-18,36)

“Mukelenge ... kena musue umue wenu ajimine, kadi udi musue bonso balue kukudimuna mitshima yabo.”
(2 Petelo 3:9)

Paulo udi wambila Bena Atena bualu bua Yesu

Pakadi Paulo ku Atena, tudi tubala ne, “Mutshima wandi wakatamba kunyingalala pakatangileye musoko muule tente ne mpingu.” (Bienzedi 17:16). Bena Atena bakuabo bakamba ne, “Yeye udi bu muambi wa malu a nzambi ya bende, bualu bua yeye wakadi wamba bualu bua Yesu ne bua dibika dia ku lufu. Bakamukuata ku tshianza, bakamulombola ku Aleopago, bakamukonka ne, Tumanye bietu diyisha edi dipia-dipia diudi wamba, anyi? (Bienzedi 17:18,19). Paulo wakimana, wakamba ne, “Nuenu Bena Atena, ndi ntangila ne, Mu malu onso nudi nutamba kutshina nzambi yenu. Bualu bua panakadi mpita mu nshila, ntangila bintu binudi nutendelela, nakasangana kabidi tshioshelu tshiakadi ne diyi difundaku ne, KUDI NZAMBI UDI KAYI MUMANYIBUE. Unudi nutendelela kanuyi bamumanye bimpe, nyeye undi numanyisha. Nzambi wakafuka buloba ne bintu bionso bidipu, bualu bua yeye udi Mukelenge wa diulu ne buloba, katu wikala mu bitendelele bidi bibaka ku bianza bia bantu. Bianza bia bantu kabiena bimukuatshila mudimu, bu padiye ne tshintu bualu, bualu bua yeye mene utu wapa bantu bonso muoyo ne mupuya ne bintu bionso. Yeye kabidi wakafuka bisamba bionso bia bantu, bafuma mu muntu umue, bua kuikalabo pa buloba buonso; wakatapulula bikondo biabo bidianjile kulongolola diambedi, ne mikalu ya miaba yabo yashikamabo. Wakenza nunku bua bakebe Nzambi, benda babubuta bua kumumonabo, kadi yeye kena netu kule kudi muntu ne muntu. Bualu bua mu Nzambi tudi ne muoyo, tudi tuendakana, tudi tuikalala; bu muakafunda bafundi benu bakuabo ne, Tuetu kabidi tudi bana bandi. Bua tuetu tudi bana ba Nzambi nunku, kambimpe bia tuetu kuelangana meshi ne, Nzambi udi bu ngolo, anyi argent, anyi dibue, tshidi tshisonga ne lungenyi ne meshi bia bantu. Diambedi Nzambi wakapitshishila bantu