

TOTSHINANGA NYA

Yawa abadi balekyeele kwi Mwanana myanda yadi mumusooolele, milwisho yee yashimangishwa ena muloo, yawa abashababadikila kwi Mwanana bu mukite bubu, shina bulamalama ena muloo. Obe Efile-Mukulu, kifulo kyodi netu ki na kineemo ki moo, atwe bana ba bantu, atusukiilaa muushi mwa mbaba yobe. Atwikuta bidibwa bilumbulukye bya kodi wetutomeshaa ku kasulo ka muwa. Etaata dyobe adimunyika myuwa yetu. (Loono 32:1, 36:8-10)

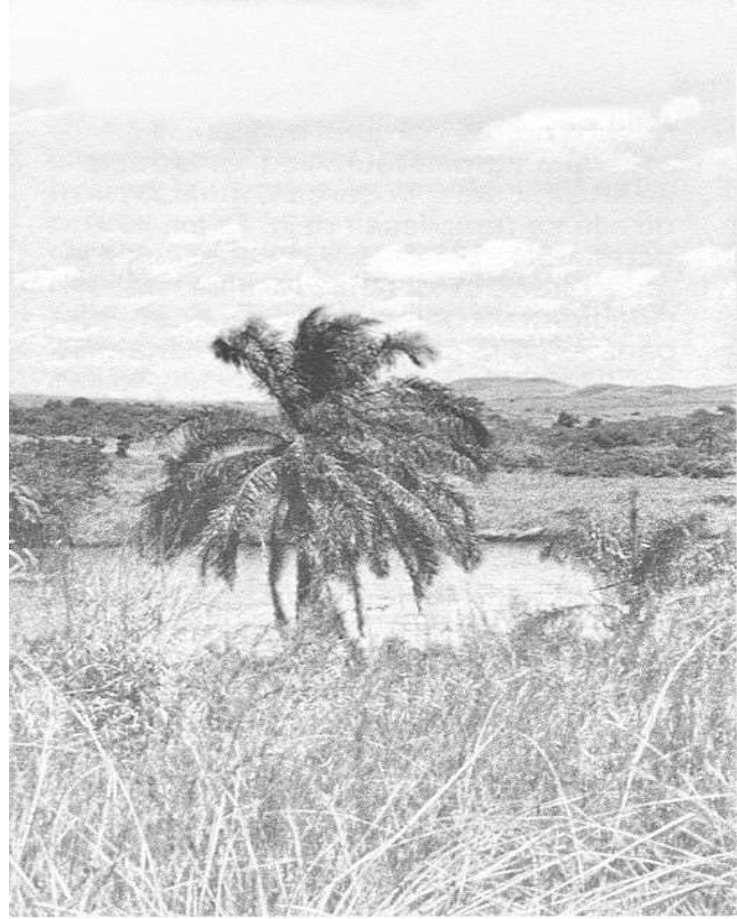
Tusumbule bushito booso na milwisho itwanyine

Tuniishe'yi kusuuka lubilo ku bintu bi ku meeso, kwetu, tutale meeso sweee kwi Yesu, fumu na mukumbashi a lukumiino, yawa, bakuminine kutambula malwa a ku nkuluse, abengyeshena buufu, ku mwanda wa muloo ubaadi ku mpala kwaye, na mushaale ku mboko ibalume ya lupuna-sulu lu'Efile-Mukulu. Mwanda'shi abitungu nubande kutentekyesha yawa bakuminine kutambula aa malwa akwitukeena kwa bantu balwiishe aye nabeene, byanushaa kwikala batshobolokye, pa'nwe kwikala babofule mu mashimba enu. (Bena Ebeleo 12:1-3)

Tukwate pepoo lukumiino lwetu

Mwanda tatwina tshite mukata epanundu'shi byakukutwa kwitufwila lusa mu kubofula kwetu, anka [twina umune baadi] mutopibwe mu bintu byoso nka bu atwe, kukaasha milwisho. Byabya twiseleleeyi peepi na lupuna-sulu lwa buntu na lukulupilo looso, byatudya kutambula lusa na byatudya kumoniibwa na kaa bwa [kupeta] bukwashi pa saa yilombane. Eshimba dyenu taditshinkishibwanga suunga kwikala na moo nya. (Bena Ebeleo 4:14-16, Yoano 14:27)

© C.E.R.S. - B.P. 1673 Kananga
République Démocratique Du Congo
Email: 33eme.cers.lit@gmail.com
<http://www.33eme-cers.org/>



TOTSHINANGA NYA

Yawa abadi balekyeele kwi Mwanana myanda yadi mumusooolele, milwisho yee yashimangishwa ena muloo, yawa abashababadikila kwi Mwanana bu mukite bubu, shina bulamalama ena muloo. Obe Efile-Mukulu, kifulo kyodi netu ki na kineemo ki moo, atwe bana ba bantu, atusukiilaa muushi mwa mbaba yobe. Atwikuta bidibwa bilumbulukye bya kodi wetutomeshaa ku kasulo ka muwa. Etaata dyobe adimunyika myuwa yetu. (Loono 32:1, 36:8-10)

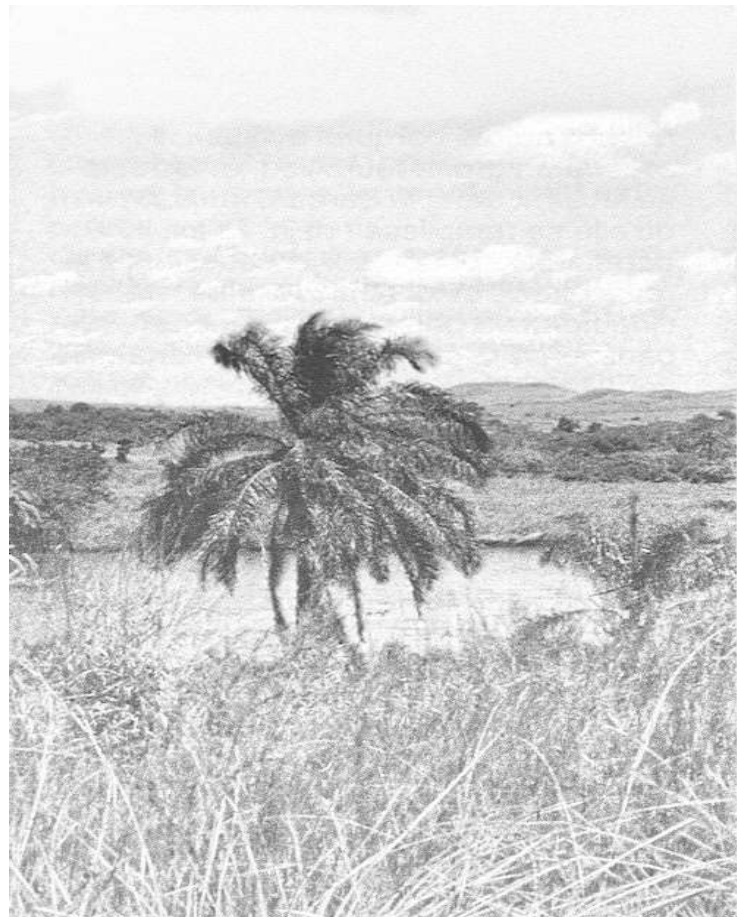
Tusumbule bushito booso na milwisho itwanyine

Tuniishe'yi kusuuka lubilo ku bintu bi ku meeso, kwetu, tutale meeso sweee kwi Yesu, fumu na mukumbashi a lukumiino, yawa, bakuminine kutambula malwa a ku nkuluse, abengyeshena buufu, ku mwanda wa muloo ubaadi ku mpala kwaye, na mushaale ku mboko ibalume ya lupuna-sulu lu'Efile-Mukulu. Mwanda'shi abitungu nubande kutentekyesha yawa bakuminine kutambula aa malwa akwitukeena kwa bantu balwiishe aye nabeene, byanushaa kwikala batshobolokye, pa'nwe kwikala babofule mu mashimba enu. (Bena Ebeleo 12:1-3)

Tukwate pepoo lukumiino lwetu

Mwanda tatwina tshite mukata epanundu'shi byakukutwa kwitufwila lusa mu kubofula kwetu, anka [twina umune baadi] mutopibwe mu bintu byoso nka bu atwe, kukaasha milwisho. Byabya twiseleleeyi peepi na lupuna-sulu lwa buntu na lukulupilo looso, byatudya kutambula lusa na byatudya kumoniibwa na kaa bwa [kupeta] bukwashi pa saa yilombane. Eshimba dyenu taditshinkishibwanga suunga kwikala na moo nya. (Bena Ebeleo 4:14-16, Yoano 14:27)

© C.E.R.S. - B.P. 1673 Kananga
République Démocratique Du Congo
Email: 33eme.cers.lit@gmail.com
<http://www.33eme-cers.org/>



TOTSHINANGA NYA

Mwanda kini nwina moo ?

Na kwifuku dyadya, pabafikile kayilwa shoobe, Yesu bebambile'shi : Tusabukweye ku dingi'eshiya. Na pabaalwishe kibumbu, babamwatshile mu bwato, nka bu bibaadi ; na angi maato namu abaadi naaye. Na kipapi kibukopo kibeebwele na mbungo ya meema yibekupilanga ku bwato, na bwato tabubaadi abuwuulu. Aye namu baadi kwikolo, mulaale pa musaamo ; na babamubushiishe bamulungula'shi : a Mulambukishi, toobasuka'shi twi mu lufu ? Na pababukile, basaashiile lupuunga, na balungwile meema akata'shi : Wumiina, yikala nyanyoo ! Na lupuunga lubalekyele, na kubeekele nyanyoo. Na bebambile'shi : Mwanda kini nwina moo ? Mbiikuni tanwina lukumiino ? Na babakwatshikile na moo ukata, na babeyipushenanga'shi : Uno naani, akokyelwa kwi lupuunga mpaa na kwi meema akata ? (Maako 4:35-41)

Yawa oso mushimeete modi mupwandjikile kukuteka mu kipindji kilombane ! Byabya, apakafiki malwa bu kyeshi kya mema, t'aakamubanga nya. Obe we kifwamino kyande, ondama ku bishyotshi, na kunyifuunyisha na ngono ya kukudibwa. (Loono 32:6,7)

Efile-Mukulu akula'shi : Leka kutshiina, mwanda ne n'obe ! Leka kwikyebukisha aku n'aku mwanda ami nyi Efile-Mukulu obe ! Nakakukwasha, nakakukankamikye, nakakulame ku bukome bwande, nakekala n'obe ... Takakulekyelela nya, sunga nkukusumbusheena. Toyilwanga bi napu kukukamika'shi : Kankamana, onyingye eshimba ? Totshinanga, sunga kwitshoboola, mwanda ami Mwanana, Efile oobe, nakekala n'obe kooso kwende. (Esaya 41:10, Yoshwa 1:5,9)

A byabya twakule kini pa bino bintu ?

Su Efile-Mukulu e lupese lwetu, nani aketukena neetu ?

Yawa'ye shii mukalwile suunga mwanaaye nabeene, anka bamulubwile ku mwanda weetu booso, mbiikuni byashaketupa bintu byoso pamune naaye kushii kwitshinta ? Nani akafundu basangulwe b'Efile-Mukulu ? Efile-

TOTSHINANGA NYA

Mwanda kini nwina moo ?

Na kwifuku dyadya, pabafikile kayilwa shoobe, Yesu bebambile'shi : Tusabukweye ku dingi'eshiya. Na pabaalwishe kibumbu, babamwatshile mu bwato, nka bu bibaadi ; na angi maato namu abaadi naaye. Na kipapi kibukopo kibeebwele na mbungo ya meema yibekupilanga ku bwato, na bwato tabubaadi abuwuulu. Aye namu baadi kwikolo, mulaale pa musaamo ; na babamubushiishe bamulungula'shi : a Mulambukishi, toobasuka'shi twi mu lufu ? Na pababukile, basaashiile lupuunga, na balungwile meema akata'shi : Wumiina, yikala nyanyoo ! Na lupuunga lubalekyele, na kubeekele nyanyoo. Na bebambile'shi : Mwanda kini nwina moo ? Mbiikuni tanwina lukumiino ? Na babakwatshikile na moo ukata, na babeyipushenanga'shi : Uno naani, akokyelwa kwi lupuunga mpaa na kwi meema akata ? (Maako 4:35-41)

Yawa oso mushimeete modi mupwandjikile kukuteka mu kipindji kilombane ! Byabya, apakafiki malwa bu kyeshi kya mema, t'aakamubanga nya. Obe we kifwamino kyande, ondama ku bishyotshi, na kunyifuunyisha na ngono ya kukudibwa. (Loono 32:6,7)

Efile-Mukulu akula'shi : Leka kutshiina, mwanda ne n'obe ! Leka kwikyebukisha aku n'aku mwanda ami nyi Efile-Mukulu obe ! Nakakukwasha, nakakukankamikye, nakakulame ku bukome bwande, nakekala n'obe ... Takakulekyelela nya, sunga nkukusumbusheena. Toyilwanga bi napu kukukamika'shi : Kankamana, onyingye eshimba ? Totshinanga, sunga kwitshoboola, mwanda ami Mwanana, Efile oobe, nakekala n'obe kooso kwende. (Esaya 41:10, Yoshwa 1:5,9)

A byabya twakule kini pa bino bintu ?

Su Efile-Mukulu e lupese lwetu, nani aketukena neetu ?

Yawa'ye shii mukalwile suunga mwanaaye nabeene, anka bamulubwile ku mwanda weetu booso, mbiikuni byashaketupa bintu byoso pamune naaye kushii kwitshinta ? Nani akafundu basangulwe b'Efile-Mukulu ? Efile-

Mukulu ngi abingishaa ; nani apiisha bantu ? - Ni Kilisto bafwiile, na basangukile, mwikale namu'ni ku mboko yibalume y'Efile-Mukulu, yawa etutekyela namu'ni ; nani aketulamuuna ku kifulo kya Kilisto ? Ni nkubingwabingwa su, mpombo su, ni nkulondwa londwa su, ni sala su, ni muswa su, masaku su, ndupete lwa ngoshi su ? Nka bu byabidi bifundwe'shi : "pamwanda wa kifulo kyobe tukwete kwipayibwa efuku dyoso ; tubaadi bamuniibwe nka bu mikooko ya kwipayibwa." Su tambyabya, mu bino bintu byoso, twi na ngobesha mwi yawa betufuule kifulo. Mwanda nashinkamisha'shi suunga lufu, suunga muwa, suunga ba mwikewulu, suunga ma fumu, suunga bintu bii binobino, suunga bintu bikyabifiki, suunga makome, suunga mbula bwa mwiwulu, suunga bula bwa muushi, suunga kingi kipangwa kyoso, takii bya kuketulamuuna ku kifulo ki'Efile-Mukulu, kii mu Kilisto Yesu, Fumwetu. (Looma 8:31-39)

Na bambile mukashi'shi : Lukumiino loobe lubakupaasha, nda na kufukama.

Na talanga, mukashi a mu kibalo baadi mulwiishi, na bawukanga'shi e ku meesa mu shibo ya mufadishi, batwadile mulangi wa alabate [wule] malaashi ; na bayimeene kumongo ku ngawo yaye, na baadi kwete kudila ; na babangile kwiyitopesha na mpolo yaye, na beyikumunanga na nyene ya ku mutwe waye ; na bafifile ngawo yaye na beyifikinye malaashi... Na balungwile mukashi'shi : Milwiso yobe yibalekyelwa. Na baaba babaadi naye ku meesa, bababangile kwamba mu abo banabene'shi : Nani uno alekyela mpaa na milwiso ? Na bambile mukashi'shi : Lukumiino loobe lubakupaasha, nda na kufukama. (Luuka 7:37-50)

Kimbayi Mwanana, paakyeleesha ; mwitanyineeyi pa kii pepi nenu

Muntu mubi alekye eshinda dyaaye, naa sha bukitekite atadiile mpango yaaye, alukiile kwi Mwanana, aye amuleesha kifulo kyaaye ; celushe kwi Efile-Mukulu eetu, mwanda nsha lusa. Mwanana akula'shi binangu byeeni tabii mumune na binangu byande, na mashinda ande tae buu mashinda enu. (Esaya 55 :6-8)

Mukulu ngi abingishaa ; nani apiisha bantu ? - Ni Kilisto bafwiile, na basangukile, mwikale namu'ni ku mboko yibalume y'Efile-Mukulu, yawa etutekyela namu'ni ; nani aketulamuuna ku kifulo kya Kilisto ? Ni nkubingwabingwa su, mpombo su, ni nkulondwa londwa su, ni sala su, ni muswa su, masaku su, ndupete lwa ngoshi su ? Nka bu byabidi bifundwe'shi : "pamwanda wa kifulo kyobe tukwete kwipayibwa efuku dyoso ; tubaadi bamuniibwe nka bu mikooko ya kwipayibwa." Su tambyabya, mu bino bintu byoso, twi na ngobesha mwi yawa betufuule kifulo. Mwanda nashinkamisha'shi suunga lufu, suunga muwa, suunga ba mwikewulu, suunga ma fumu, suunga bintu bii binobino, suunga bintu bikyabifiki, suunga makome, suunga mbula bwa mwiwulu, suunga bula bwa muushi, suunga kingi kipangwa kyoso, takii bya kuketulamuuna ku kifulo ki'Efile-Mukulu, kii mu Kilisto Yesu, Fumwetu. (Looma 8:31-39)

Na bambile mukashi'shi : Lukumiino loobe lubakupaasha, nda na kufukama.

Na talanga, mukashi a mu kibalo baadi mulwiishi, na bawukanga'shi e ku meesa mu shibo ya mufadishi, batwadile mulangi wa alabate [wule] malaashi ; na bayimeene kumongo ku ngawo yaye, na baadi kwete kudila ; na babangile kwiyitopesha na mpolo yaye, na beyikumunanga na nyene ya ku mutwe waye ; na bafifile ngawo yaye na beyifikinye malaashi... Na balungwile mukashi'shi : Milwiso yobe yibalekyelwa. Na baaba babaadi naye ku meesa, bababangile kwamba mu abo banabene'shi : Nani uno alekyela mpaa na milwiso ? Na bambile mukashi'shi : Lukumiino loobe lubakupaasha, nda na kufukama. (Luuka 7:37-50)

Kimbayi Mwanana, paakyeleesha ; mwitanyineeyi pa kii pepi nenu

Muntu mubi alekye eshinda dyaaye, naa sha bukitekite atadiile mpango yaaye, alukiile kwi Mwanana, aye amuleesha kifulo kyaaye ; celushe kwi Efile-Mukulu eetu, mwanda nsha lusa. Mwanana akula'shi binangu byeeni tabii mumune na binangu byande, na mashinda ande tae buu mashinda enu. (Esaya 55 :6-8)