

Anka kikuba kya Kikudi ni nkifulo, muloo, kufukama, lwishinko, kalolo, buwa, kulamata, kupopeela, kwiyisha: kubino bintu, takwi mwiya nya. Byabya baaba bekale bena Kilisto, babapudika mbidi na kwipaana kwa ku ngabyabi yayo ku nkuluse. Su twi na muwa mu Kikudi, tutambukyeyi namu mu Kikudi.

(Bena Ngalateya 5:22-25)

**Tanongamishanga Kikudi-E-Selele'Efile-Mukulu**

Tanongamishanga Kikudi-E-Selele'Efile-Mukulu, mwadi'ye nubeelwe kitampi bwa efuku dya kufungushiibwa. Kaashaayi munkatshi mwenu, buulo booso, na sungu, yoso yibukopo, na bukyelo booso, n'ewunga dyoso, na mulomo oso, na kifita kyoso; anka yikalaayi baasha kalolo kwi bantu na bantu, nukyengye na abakyengye, nwilekyeshene bubi bantu na bantu buu bii Efile-Mukulu namu mwinulekyeele mu Kilisto.

(Bena Efeso 4:30-32)

Tanuwuuku'shi mbidi yeenu ntempelo a Kikudi-E-Selele e munda mwenu su? Na anudi batambule kwi Efile-Mukulu su? Na tanwibwenu'nwe banabeene nya; mwanda nubaadi bawudiibwe ku muulo ukata. Byabya tumbishaayi namu Efile-Mukulu mu mbidi yeenu.

(1 Bena Kolente 6:19-20)

Pa uno mwanda tanwikalanga bashiina kinangu, anka shinguulaayi kikyebe k'eshimba dya Fumu. Tanukolwanga malofu, mwanka mwi bukitekite; anka yikalaayi bawushiibwe na Kikudi.

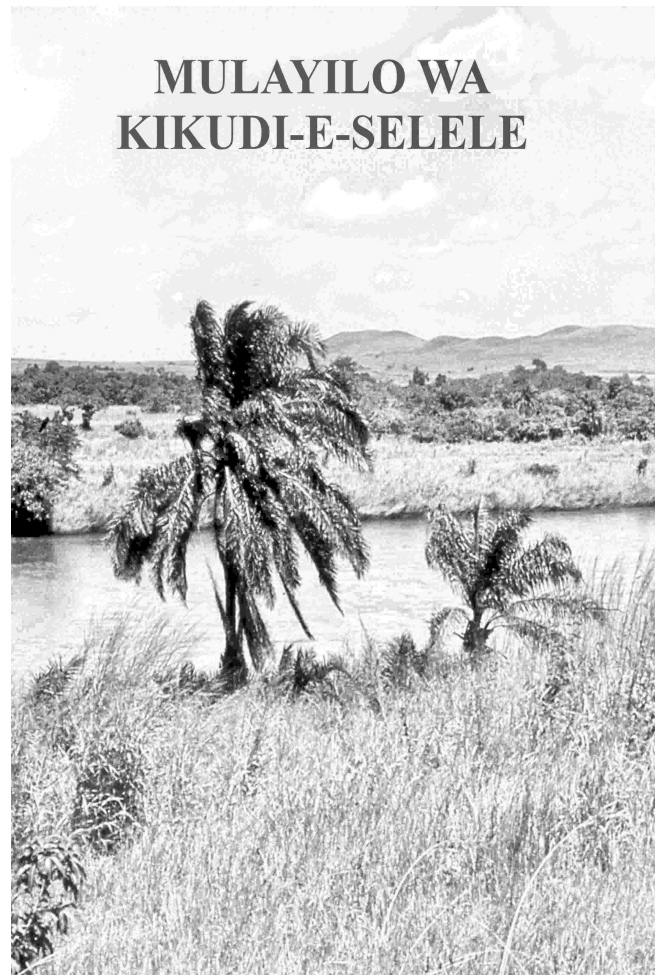
(Bena Efeso 5:17-18)

© C.E.R.S. - B.P. 1673 Kananga

République Démocratique Du Congo

Email: 33eme.cers.lit@gmail.com

<http://www.33eme-cers.org/>



Anka kikuba kya Kikudi ni nkifulo, muloo, kufukama, lwishinko, kalolo, buwa, kulamata, kupopeela, kwiyisha: kubino bintu, takwi mwiya nya. Byabya baaba bekale bena Kilisto, babapudika mbidi na kwipaana kwa ku ngabyabi yayo ku nkuluse. Su twi na muwa mu Kikudi, tutambukyeyi namu mu Kikudi.

(Bena Ngalateya 5:22-25)

**Tanongamishanga Kikudi-E-Selele'Efile-Mukulu**

Tanongamishanga Kikudi-E-Selele'Efile-Mukulu, mwadi'ye nubeelwe kitampi bwa efuku dya kufungushiibwa. Kaashaayi munkatshi mwenu, buulo booso, na sungu, yoso yibukopo, na bukyelo booso, n'ewunga dyoso, na mulomo oso, na kifita kyoso; anka yikalaayi baasha kalolo kwi bantu na bantu, nukyengye na abakyengye, nwilekyeshene bubi bantu na bantu buu bii Efile-Mukulu namu mwinulekyeele mu Kilisto.

(Bena Efeso 4:30-32)

Tanuwuuku'shi mbidi yeenu ntempelo a Kikudi-E-Selele e munda mwenu su? Na anudi batambule kwi Efile-Mukulu su? Na tanwibwenu'nwe banabeene nya; mwanda nubaadi bawudiibwe ku muulo ukata. Byabya tumbishaayi namu Efile-Mukulu mu mbidi yeenu.

(1 Bena Kolente 6:19-20)

Pa uno mwanda tanwikalanga bashiina kinangu, anka shinguulaayi kikyebe k'eshimba dya Fumu. Tanukolwanga malofu, mwanka mwi bukitekite; anka yikalaayi bawushiibwe na Kikudi.

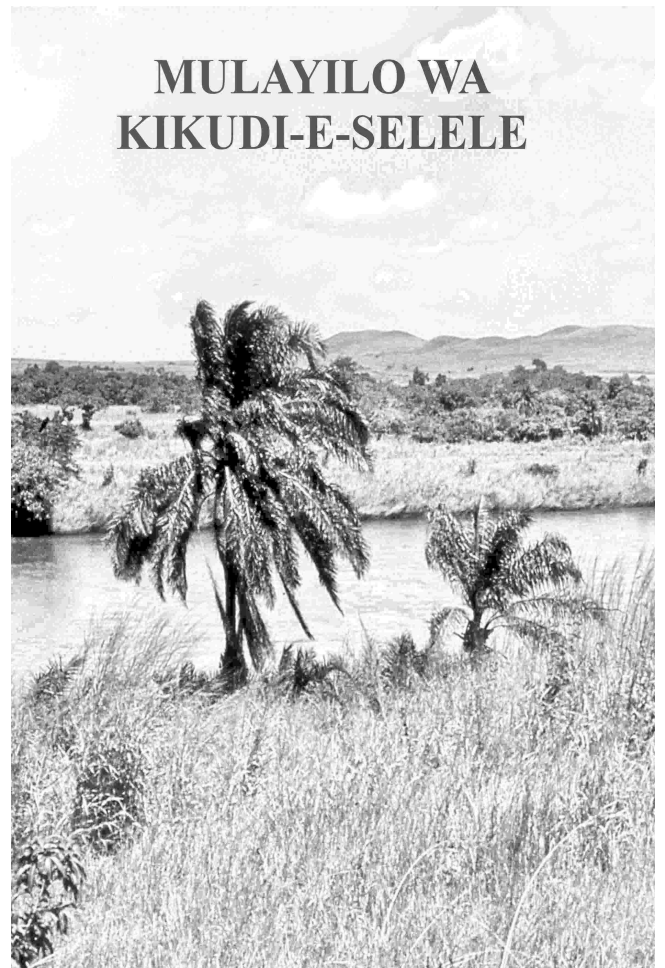
(Bena Efeso 5:17-18)

© C.E.R.S. - B.P. 1673 Kananga

République Démocratique Du Congo

Email: 33eme.cers.lit@gmail.com

<http://www.33eme-cers.org/>



## Mulayilo wa Kikudi-E-selele na kufika kwa kyo

Fumu Yesu bambile'shi, Su nwinami kifulo lamaayi milango yande; n'ami nakatekye Yaya, n'aye akenupa mungi musambi, bwa kwikala nenu yikalayika. Kikudi ki'eyendo, yawa abashi byakutambula kwi bena senga, mwanda'shi tabamumono na tabamuwulu nya; ank'anwe, anumuwuku, mwanda'shi e nenu, na ekala munda mwenu.

Suunga mbyabya, nenulungula eyendo: bii makasa kwanudi su'mi n'ende; mwanda su ntshi mwende. Musambi takafiki kwanudi nya, anka su nenda, nakenutumina'ye. (Yoano 14:15-17, 16:7)

Na pabakumbene efuku dya pentekote, babaadi booso bebungye mbalo yimune. Na mukapindji kapeela kubapushikile ewunga, bu dya kipapi kibukopo, na kibawuudile shibo yosobabadi bashaleele. Na kubebamwenekyele ndimi yilekeene, bu ya kaalo; na yibashaleele pa muntu oso akwabadi. Na babekeele booso bawushiiuwe na Kikudi-E-Selele, na bababangile kwakula mu yingi ndimi, muyile bibebapanga Kikudi bya kwakula.

(Mikitshino 2:1-4)

### Muntu Oso Akumiina Kilisto Ena Kikudi-E-Selele.

Mwadi'ye anwe namu [nwibakulupile], pa kupusha eyi di'eyendo, mukandu wibuwa wa kipandjilo kyenu; pakwiwukumina namu, nubeelelwe kitampi kya Kikudi-E-Selele kibalayilwe, mwikale kyee kya bupyani bwetu, bwa kukuudiibwa kupwe kutambulwa, mu kutumbisha kwa ntumbo yaye. (Efeso 1:13-14)

Kutala namu ni naaye etwanya kumune neenu kwi Kilisto na mwitushingye mwimu, ni Efile-Mukulu, n'aye betwelele kitampi, na betupeele kyee kya kikudi mu mashimba eetu.

(2 Kolente 1:21-22)

Na lukulupilo t'alukwatshisha buufu nya, mwanda'shi kifulo ki'Efile-Mukulu ni nkipongoolwe mu mashimba mwetu mu Kikudi-E-Selele baadi mwituppeebe. ... Mwanda tanwibatambule Kikudi kya bupika byanudya kwikala dingi na kutshiina, anka nwibatambule Kikudi kya bu baana, kwakidi ngi kwatweele

## Mulayilo wa Kikudi-E-selele na kufika kwa kyo

Fumu Yesu bambile'shi, Su nwinami kifulo lamaayi milango yande; n'ami nakatekye Yaya, n'aye akenupa mungi musambi, bwa kwikala nenu yikalayika. Kikudi ki'eyendo, yawa abashi byakutambula kwi bena senga, mwanda'shi tabamumono na tabamuwulu nya; ank'anwe, anumuwuku, mwanda'shi e nenu, na ekala munda mwenu.

Suunga mbyabya, nenulungula eyendo: bii makasa kwanudi su'mi n'ende; mwanda su ntshi mwende. Musambi takafiki kwanudi nya, anka su nenda, nakenutumina'ye. (Yoano 14:15-17, 16:7)

Na pabakumbene efuku dya pentekote, babaadi booso bebungye mbalo yimune. Na mukapindji kapeela kubapushikile ewunga, bu dya kipapi kibukopo, na kibawuudile shibo yosobabadi bashaleele. Na kubebamwenekyele ndimi yilekeene, bu ya kaalo; na yibashaleele pa muntu oso akwabadi. Na babekeele booso bawushiiuwe na Kikudi-E-Selele, na bababangile kwakula mu yingi ndimi, muyile bibebapanga Kikudi bya kwakula.

(Mikitshino 2:1-4)

### Muntu Oso Akumiina Kilisto Ena Kikudi-E-Selele.

Mwadi'ye anwe namu [nwibakulupile], pa kupusha eyi di'eyendo, mukandu wibuwa wa kipandjilo kyenu; pakwiwukumina namu, nubeelelwe kitampi kya Kikudi-E-Selele kibalayilwe, mwikale kyee kya bupyani bwetu, bwa kukuudiibwa kupwe kutambulwa, mu kutumbisha kwa ntumbo yaye. (Efeso 1:13-14)

Kutala namu ni naaye etwanya kumune neenu kwi Kilisto na mwitushingye mwimu, ni Efile-Mukulu, n'aye betwelele kitampi, na betupeele kyee kya kikudi mu mashimba eetu.

(2 Kolente 1:21-22)

Na lukulupilo t'alukwatshisha buufu nya, mwanda'shi kifulo ki'Efile-Mukulu ni nkipongoolwe mu mashimba mwetu mu Kikudi-E-Selele baadi mwituppeebe. ... Mwanda tanwibatambule Kikudi kya bupika byanudya kwikala dingi na kutshiina, anka nwibatambule Kikudi kya bu baana, kwakidi ngi kwatweele

musaase'shi: Abba, Yaya! Kikudi nabeene atuulu bukamoni mu kikudi kyeetu'shi twi bana b'Efile-Mukulu.

(Looma 5:5, 8:15-16)

### Nwanashingule Kikudi-E-Selele Byobyoby

Byabya Kikudi akyakula patoka'shi, ku mafuku a kunfudiilo kwanatombokye bangi bantu pa mwanda wa lukumiino, mu kulamata ku bikudi bya bongodi na malambukishi a mikishi.

(1 Timote 4:1)

Ku bino anukatundula kikudi ki'Efile-Mukulu: kikudi kyoso akitemuna Yesu Kilisto mufikye mumbidi ni ki'Efile-Mukulu, na kikudi kyoso kisha kitemuna Yesu Kilisto mufikye mumbidi ta nki'Efile-Mukulu nya; na kino ni [kikudi] kya ante-kilisto, kyakya kibanupushishe'shi akifiki, na bino bino ta kipwile kufika mu senga.

Ku bino, atushinguula'shi twi babombeele mwadi n'aye mwatudi, ngi kyadi mwitupe ku Kikudi kyaye: N'atwe tubamono na tubatuulu bukamoni, shi Yaya batumine Mwana [mwanda wa kwikala] Mupaashi a senga. Yawa oso akatemuna'shi Yesu Mwana Efile-Mukulu, Efile-Mukulu abombela mwadi n'aye mwi Efile-Mukulu.

(1 Yoano 4:2-3,13-15)

### Nutambukye mu Kikudi

Anka namba'shi: tambukaayi mu Kikudi na tanulombashanga lwabi lwa mbidi nya. Mwanda mbidi ngishikwene na Kikudi, na Kikudi namu nkishikwene na mbidi; na bino bintu mbitupishene kintu kwi kikwabo, bwa'shi tanukukitanga bintu mwanukyebela nya.

(Bena Ngalateya 5:16-17)

Anka baaba abalonda abikyebe mbidi bee na binangu byabo ku bintu bya mbidi; anka baaba beekale muyile Kikudi, binangu byabo namu bii ku bintu bya Kikudi; mwanda kinangu kya mbidi ni ndufu, anka mitentekyesho ya Kikudi ni muwa na kufukama.

(Looma 8:5-6)

musaase'shi: Abba, Yaya! Kikudi nabeene atuulu bukamoni mu kikudi kyeetu'shi twi bana b'Efile-Mukulu.

(Looma 5:5, 8:15-16)

### Nwanashingule Kikudi-E-Selele Byobyoby

Byabya Kikudi akyakula patoka'shi, ku mafuku a kunfudiilo kwanatombokye bangi bantu pa mwanda wa lukumiino, mu kulamata ku bikudi bya bongodi na malambukishi a mikishi.

(1 Timote 4:1)

Ku bino anukatundula kikudi ki'Efile-Mukulu: kikudi kyoso akitemuna Yesu Kilisto mufikye mumbidi ni ki'Efile-Mukulu, na kikudi kyoso kisha kitemuna Yesu Kilisto mufikye mumbidi ta nki'Efile-Mukulu nya; na kino ni [kikudi] kya ante-kilisto, kyakya kibanupushishe'shi akifiki, na bino bino ta kipwile kufika mu senga.

Ku bino, atushinguula'shi twi babombeele mwadi n'aye mwatudi, ngi kyadi mwitupe ku Kikudi kyaye: N'atwe tubamono na tubatuulu bukamoni, shi Yaya batumine Mwana [mwanda wa kwikala] Mupaashi a senga. Yawa oso akatemuna'shi Yesu Mwana Efile-Mukulu, Efile-Mukulu abombela mwadi n'aye mwi Efile-Mukulu.

(1 Yoano 4:2-3,13-15)

### Nutambukye mu Kikudi

Anka namba'shi: tambukaayi mu Kikudi na tanulombashanga lwabi lwa mbidi nya. Mwanda mbidi ngishikwene na Kikudi, na Kikudi namu nkishikwene na mbidi; na bino bintu mbitupishene kintu kwi kikwabo, bwa'shi tanukukitanga bintu mwanukyebela nya.

(Bena Ngalateya 5:16-17)

Anka baaba abalonda abikyebe mbidi bee na binangu byabo ku bintu bya mbidi; anka baaba beekale muyile Kikudi, binangu byabo namu bii ku bintu bya Kikudi; mwanda kinangu kya mbidi ni ndufu, anka mitentekyesho ya Kikudi ni muwa na kufukama.

(Looma 8:5-6)