

bafikile ... na bayimeene munkatshi mwabo na bambile'shi : kufukama kwikale neenu ! Kunyima balungwile Tomase'shi : fwiisha munwe oobe kuno, na otale mu maasa mwande ; fwiisha eyasa dyobe na wedyele mu lubafu lwande ; na twekalanga shii na lukumiino, anka sha lukumiino. Tomase balulwile na bamulungwile'shi ; Fumwami na Efile-Mukulu ande ! Yesu bamulungwile'shi : bokumina kumwanda boomono ; anka baasha mwabi mbaaba abakumina kushii kumona. (Yoano 20 :19-29)

Eshinda dya kufukama

Yesu bebalungwile dingi, na kwamba'shi : Ami, ne etaata dya senga ; yawa andondo'mi takatambukila mu mufito nya, anka akeekala n'etaata dya muwa. Nenulekyela kufukama ; nenupa kufukama kwande ; ami ntanenupa bu abipeyeshena bena senga nya. Eshimba dyenu taditshinkishib-wanga suunga kwikala na moo nya. (Yoano 8:12, 14:27)

Fumu afiki : « bwa kukunkusha ngawo yeetu mwishinda dya kufukama ». (Luuka 1:79)

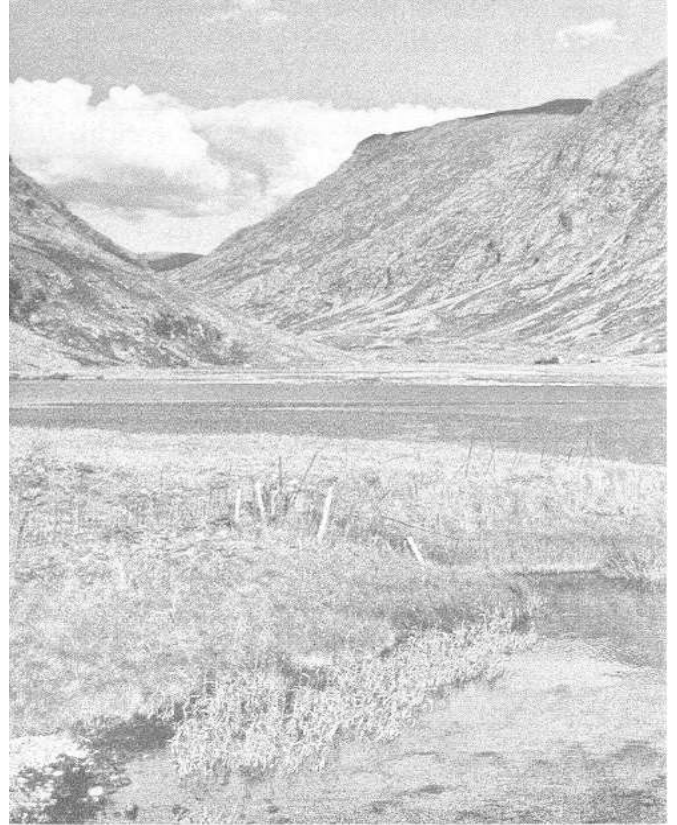
Anka suuka ngabyabi ya bukinga, na londa kululama, lukumiino, kifulo, kufukama na baba abatemuna Fumu na eshimba ditooka. (2 Timote 2:22)

Mwanda bufumu bw'Efile-Mukulu tankudya na kutoma, anka ni nkululama, na kufukama na muloo mu Kikudi-E-Selele. (Bena Looma 14:17)

Byabya Efile-Mukulu a lukulupilo enuwushe na muloo oso na kufukama mu kukumiina, bwa'shi nutame mu lukulupilo mu bukome bwa Kikudi-E-Selele. (Looma 15:13)

© C.E.R.S. - B.P. 1673 Kananga
République Démocratique Du Congo
Email: 33eme.cers.lit@gmail.com
<http://www.33eme-cers.org>

KUFUKAMA KW'EFILÉ-MUKULU



bafikile ... na bayimeene munkatshi mwabo na bambile'shi : kufukama kwikale neenu ! Kunyima balungwile Tomase'shi : fwiisha munwe oobe kuno, na otale mu maasa mwande ; fwiisha eyasa dyobe na wedyele mu lubafu lwande ; na twekalanga shii na lukumiino, anka sha lukumiino. Tomase balulwile na bamulungwile'shi ; Fumwami na Efile-Mukulu ande ! Yesu bamulungwile'shi : bokumina kumwanda boomono ; anka baasha mwabi mbaaba abakumina kushii kumona. (Yoano 20 :19-29)

Eshinda dya kufukama

Yesu bebalungwile dingi, na kwamba'shi : Ami, ne etaata dya senga ; yawa andondo'mi takatambukila mu mufito nya, anka akeekala n'etaata dya muwa. Nenulekyela kufukama ; nenupa kufukama kwande ; ami ntanenupa bu abipeyeshena bena senga nya. Eshimba dyenu taditshinkishib-wanga suunga kwikala na moo nya. (Yoano 8:12, 14:27)

Fumu afiki : « bwa kukunkusha ngawo yeetu mwishinda dya kufukama ». (Luuka 1:79)

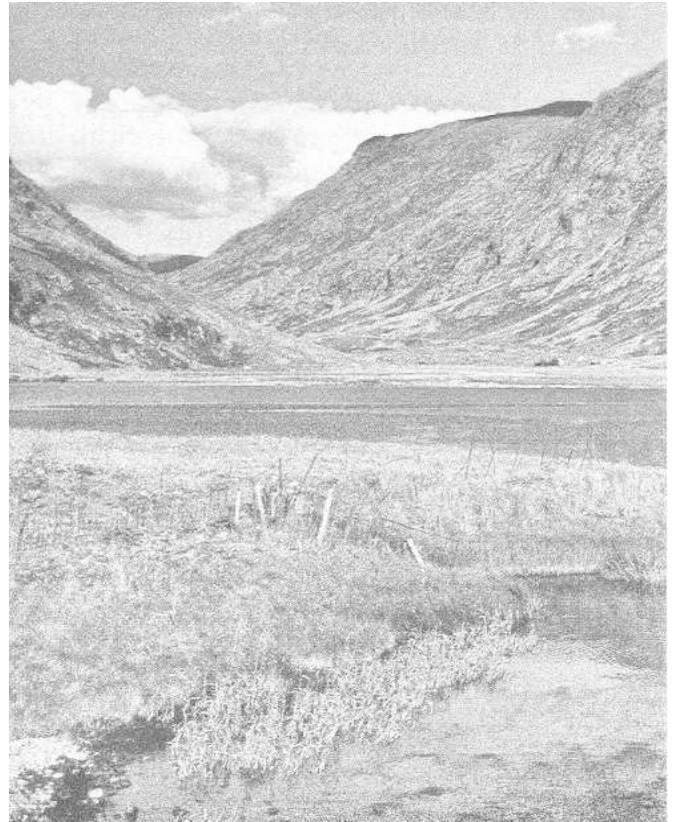
Anka suuka ngabyabi ya bukinga, na londa kululama, lukumiino, kifulo, kufukama na baba abatemuna Fumu na eshimba ditooka. (2 Timote 2:22)

Mwanda bufumu bw'Efile-Mukulu tankudya na kutoma, anka ni nkululama, na kufukama na muloo mu Kikudi-E-Selele. (Bena Looma 14:17)

Byabya Efile-Mukulu a lukulupilo enuwushe na muloo oso na kufukama mu kukumiina, bwa'shi nutame mu lukulupilo mu bukome bwa Kikudi-E-Selele. (Looma 15:13)

© C.E.R.S. - B.P. 1673 Kananga
République Démocratique Du Congo
Email: 33eme.cers.lit@gmail.com
<http://www.33eme-cers.org>

KUFUKAMA KW'EFILÉ-MUKULU



KUFUKAMA KW'EFILE-MUKULU

Kufukama n'Efile-Mukulu

Mwanda Kilisto namu bamwene malwa mususa umune pa mwanda wa milwisho, aye mululame pa mwanda wa bashi balulame ; byadya kwitutwala kwi Efile-Mukulu. (1 Mpyele 3 :18)

Pakwikala babingishibwe pa lukumiino, twina kufukama n'Efile-Mukulu mu fumwetu Yesu Kilisto, kwadi'ye namu ngi kubatupete kitwelelo pa lukumiino, mu kano kaa mwatudi, na atwitumbisha mu lukulupilo lwa ntumbo y'Efile-Mukulu ... mwanda'shi Kilisto, pabatudi tatwi na bukome, ku kipindji kilombane, bafwidiile babi. Mwanda nka paapa, pa mwanda wa mululame, muntu mupwandjikiile kufwa, mwanda'shi pa mwanda wa muntu e buwa, pang, muntu mupwandjikiile kwata kitshibilo kya kufwa); Anka Efile-Mukulu bashinkamisha kifulo kyaye nabeene kwatudi, kwamba'shi, pabatudi tukii balwishi, Kilisto bafwile pamwanda wetu. Bebungu namu, pa kwikala babingishibwe binobino ku mase aaye, atukekala bafungushibwe ku sungu kwadi'ye ! Mwanda ni naaye kufukama kwetu. (Looma 5 :1-10, Bena Efeso 2 :14)

Kufukama kw'Efile-Mukulu.

Byabya a bifundwe abyamba namini ? « Abalahama bakuminine Efile-Mukulu, na byabya bibamubadikiilwe bu kululama ». Kutala namu kwi yawa akitshi mikitshino efuto tandjibadikiilwe bu kya buntu nya, anka bu kishiyo akitungu kufuta ; byabya kwi yawa sha kitshi mikitshino, anka akumiina mwi yawa abingisha mulwishi ; lukumiino lwaye alumubadikiilwa bu kululama. Anka bu abyakula namu Dafidi bwa kukanyibwa kwa muntu abadikiilwa kululama kw'Efile-Mukulu kushii mikitshino : « Baasha mwabi ni mbaaba babalekyelwa bilubilo byabo na baasha milwisho yibabwikipilwa ; sha mwabi nka yawa muntu sha badikiilwa mulwisho kwi Mwanana ». (Looma 4 :3-8)

KUFUKAMA KW'EFILE-MUKULU

Kufukama n'Efile-Mukulu

Mwanda Kilisto namu bamwene malwa mususa umune pa mwanda wa milwisho, aye mululame pa mwanda wa bashi balulame ; byadya kwitutwala kwi Efile-Mukulu. (1 Mpyele 3 :18)

Pakwikala babingishibwe pa lukumiino, twina kufukama n'Efile-Mukulu mu fumwetu Yesu Kilisto, kwadi'ye namu ngi kubatupete kitwelelo pa lukumiino, mu kano kaa mwatudi, na atwitumbisha mu lukulupilo lwa ntumbo y'Efile-Mukulu ... mwanda'shi Kilisto, pabatudi tatwi na bukome, ku kipindji kilombane, bafwidiile babi. Mwanda nka paapa, pa mwanda wa mululame, muntu mupwandjikiile kufwa, mwanda'shi pa mwanda wa muntu e buwa, pang, muntu mupwandjikiile kwata kitshibilo kya kufwa); Anka Efile-Mukulu bashinkamisha kifulo kyaye nabeene kwatudi, kwamba'shi, pabatudi tukii balwishi, Kilisto bafwile pamwanda wetu. Bebungu namu, pa kwikala babingishibwe binobino ku mase aaye, atukekala bafungushibwe ku sungu kwadi'ye ! Mwanda ni naaye kufukama kwetu. (Looma 5 :1-10, Bena Efeso 2 :14)

Kufukama kw'Efile-Mukulu.

Byabya a bifundwe abyamba namini ? « Abalahama bakuminine Efile-Mukulu, na byabya bibamubadikiilwe bu kululama ». Kutala namu kwi yawa akitshi mikitshino efuto tandjibadikiilwe bu kya buntu nya, anka bu kishiyo akitungu kufuta ; byabya kwi yawa sha kitshi mikitshino, anka akumiina mwi yawa abingisha mulwishi ; lukumiino lwaye alumubadikiilwa bu kululama. Anka bu abyakula namu Dafidi bwa kukanyibwa kwa muntu abadikiilwa kululama kw'Efile-Mukulu kushii mikitshino : « Baasha mwabi ni mbaaba babalekyelwa bilubilo byabo na baasha milwisho yibabwikipilwa ; sha mwabi nka yawa muntu sha badikiilwa mulwisho kwi Mwanana ». (Looma 4 :3-8)

...Fumu taadi peepi ; tanwikalanga na lukalakashi lwa kintu suunga nkimune, anka mu bintu byoso tulaayi nkalo yeenu kwi Efile-Mukulu mu nteko na kwiambiila na lutumbu ; na kufukama ku'Efile-Mukulu, kwakwa kukile kinangu kyoso, akulama mashimba enu na nangungu yeenu mu Kilisto Yesu. (Bena Fidipi 4 :5-7)

Efile-Mukulu a kufukama

Ntompe, aye Efile-Mukulu, na uuka eshimba dyande ! Mpime, na uuka binangu byande ! Tala su ne mwishinda dibi, na nkunkushe mu eshinda dya yikalayika ! (Ngono 139 :23,24)

Anka Efile-Mukulu a kufukama yawa babushishe mulami a mikooko mukata ku bafwe, mu [bukome bwa] mase a kilombeeno kya yikalayika, Fumwetu Yesu, enwikashe bakumbane mu kikitshino kyoso kibuuwa, bwa kukita kikyebe ki'eshimba dyaye, mu kulombasha kwanudi kyakya kilumulukye kumpala kwaye, kukidila kwi Yesu Kilisto. (Bena Ebeleo 13 :20-21)

Kubibashala, bakwetu, bintu byoso bi'eyendo, bintu byoso bya kineemo, bintu byoso bilulame, bintu byoso biselelee, bintu byoso bya kufudiilwa kifulo, bintu byoso bya nkumo ibuwa, - su kumwanda oso wi buwa na kikanyino kyoso, - byabya bino bintu bikale mu nangungu yeenu : byabya byanudi nabyo na byanudi bayiye, na bapete, na bapushe, na bamone mwandji, - kitaayi bino bintu, na Efile-Mukulu akufukama akekala nenu. (Bena Fidipi 4:8,9)

Kufukama kwikale kwanudi

Kyolwa, mu efuku dya Lubingo (Efuku dya kusanguka kwa Yesu) Yesu bafikile na bayimeene munkatshi mwabo ... kutala'shi Tomaseumune a kwikumi na babidi ... tabaadi nabo pabafikile Yesu. Bangi beeyi babamulwingwile'shi : tubamono Fumu. Anka bebalungwile'shi : anka nakumona mu maasa aaye bitundwilo bya misumaadi, na neela munwe wande mu lubafu lwaye, ngi bya nkikumiina. Na kunyima kwa mafuku mwanda, beeyi baaye babaadi bebungile dingi mu shibo, na Tomase baadi nabo. Yesu

...Fumu taadi peepi ; tanwikalanga na lukalakashi lwa kintu suunga nkimune, anka mu bintu byoso tulaayi nkalo yeenu kwi Efile-Mukulu mu nteko na kwiambiila na lutumbu ; na kufukama ku'Efile-Mukulu, kwakwa kukile kinangu kyoso, akulama mashimba enu na nangungu yeenu mu Kilisto Yesu. (Bena Fidipi 4 :5-7)

Efile-Mukulu a kufukama

Ntompe, aye Efile-Mukulu, na uuka eshimba dyande ! Mpime, na uuka binangu byande ! Tala su ne mwishinda dibi, na nkunkushe mu eshinda dya yikalayika ! (Ngono 139 :23,24)

Anka Efile-Mukulu a kufukama yawa babushishe mulami a mikooko mukata ku bafwe, mu [bukome bwa] mase a kilombeeno kya yikalayika, Fumwetu Yesu, enwikashe bakumbane mu kikitshino kyoso kibuuwa, bwa kukita kikyebe ki'eshimba dyaye, mu kulombasha kwanudi kyakya kilumulukye kumpala kwaye, kukidila kwi Yesu Kilisto. (Bena Ebeleo 13 :20-21)

Kubibashala, bakwetu, bintu byoso bi'eyendo, bintu byoso bya kineemo, bintu byoso bilulame, bintu byoso biselelee, bintu byoso bya kufudiilwa kifulo, bintu byoso bya nkumo ibuwa, - su kumwanda oso wi buwa na kikanyino kyoso, - byabya bino bintu bikale mu nangungu yeenu : byabya byanudi nabyo na byanudi bayiye, na bapete, na bapushe, na bamone mwandji, - kitaayi bino bintu, na Efile-Mukulu akufukama akekala nenu. (Bena Fidipi 4:8,9)

Kufukama kwikale kwanudi

Kyolwa, mu efuku dya Lubingo (Efuku dya kusanguka kwa Yesu) Yesu bafikile na bayimeene munkatshi mwabo ... kutala'shi Tomaseumune a kwikumi na babidi ... tabaadi nabo pabafikile Yesu. Bangi beeyi babamulwingwile'shi : tubamono Fumu. Anka bebalungwile'shi : anka nakumona mu maasa aaye bitundwilo bya misumaadi, na neela munwe wande mu lubafu lwaye, ngi bya nkikumiina. Na kunyima kwa mafuku mwanda, beeyi baaye babaadi bebungile dingi mu shibo, na Tomase baadi nabo. Yesu