

bya kukumiina nya. Namana baadi mumukonkwele bwa kukumiina, anka'ye bapeele » (2 Bafumu 5:16). Kipandjilo takiwulwaa, ni nkyabuntu ki'Efile-Mukulu, « Mwanda nwibapashiibwe pa buntu, pa lukumiino, na byabya tambifikye kwanudi, ni mbuntu bu'Efile-Mukulu : kushi pa mwanda wa mikitshino kupela'shi tala muntu etumbika ». (Bena Efeso 2:8,9)

#### Myaku ya mukandu wi buwa

Pabalambukiishe Mpolo mukandu wi buwa, balungwile bantu booso nshima ya « mu kushishikila na kwi bena Yuda na kwi bena Ngidiki pa mwanda wa kwilanga mwi Efile-Mukulu na lukumiino mwi Fumwetu Yesu Kilisto » (Mikitshino 20:21).

« Su owela kukanwa koobe'shi Yesu ni Fumu na su okumiina mwishimba dyobe'shi Efile-Mukulu bamubushiishe ku bafwe, okapashiibwa. Mwanda kukumiina mwishimba akufwishaa kululama, na kukanwa akushinkamishaa kipandjilo, mwanda bifundwe abyamba'shi : Ooso akakumiina mwadi takakwatshiswa buufu nya ». (Looma 10:9-11)

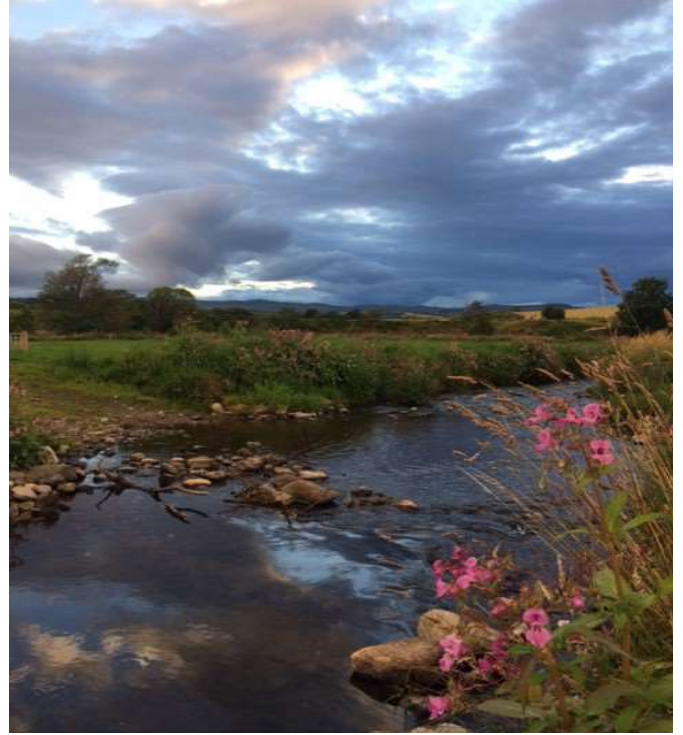
#### Nda na kufukama

Namana bawukanga'shi Efile-Mukulu bamupashiishe pa lusa lwaye. Tabadini sha sudi nya. Kubanga papa badyawuku'shi eshinda dya lukumiino tadibadya kwikala dibofule nya, anka bawukanga'shi Efile-Mukulu badyaa kumukwasha. mayi a Edisha kwadi « Ndayi na kufukama », abaadi mayi akukankamika. Binobino eena kufukama n'Efile-Mukulu – awuku Efile-Mukulu a kufukama, « Atumbikiibwe Efile-Mukulu na shaaye na Fumwetu Yesu Kilisto, Yaya a lusa lwibungi n'Efile-Mukulu a busambi booso ». (Bena Kolente 1:3)

(Mbyalulwe mu Kisongye kwi bakwetu bano : Arthur NYINDU ASSANI, na Benjamin KAPEPULA NKONGOLO, mu Kabinda mu kipwa kya 2024, mweshi wa kasatu).

© C.E.R.S. - B.P. 1673 Kananga  
République Démocratique Du Congo  
Email: 33eme.cers.lit@gmail.com  
<http://www.33eme-cers.org/>

## KA MPIKA KABAKASHI KA BEENA ISALELE



bya kukumiina nya. Namana baadi mumukonkwele bwa kukumiina, anka'ye bapeele » (2 Bafumu 5:16). Kipandjilo takiwulwaa, ni nkyabuntu ki'Efile-Mukulu, « Mwanda nwibapashiibwe pa buntu, pa lukumiino, na byabya tambifikye kwanudi, ni mbuntu bu'Efile-Mukulu : kushi pa mwanda wa mikitshino kupela'shi tala muntu etumbika ». (Bena Efeso 2:8,9)

#### Myaku ya mukandu wi buwa

Pabalambukiishe Mpolo mukandu wi buwa, balungwile bantu booso nshima ya « mu kushishikila na kwi bena Yuda na kwi bena Ngidiki pa mwanda wa kwilanga mwi Efile-Mukulu na lukumiino mwi Fumwetu Yesu Kilisto » (Mikitshino 20:21).

« Su owela kukanwa koobe'shi Yesu ni Fumu na su okumiina mwishimba dyobe'shi Efile-Mukulu bamubushiishe ku bafwe, okapashiibwa. Mwanda kukumiina mwishimba akufwishaa kululama, na kukanwa akushinkamishaa kipandjilo, mwanda bifundwe abyamba'shi : Ooso akakumiina mwadi takakwatshiswa buufu nya ». (Looma 10:9-11)

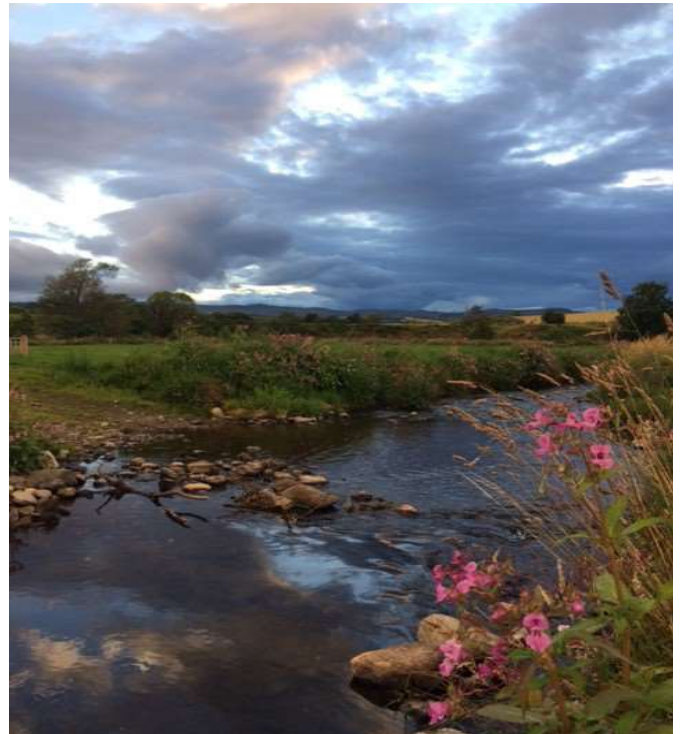
#### Nda na kufukama

Namana bawukanga'shi Efile-Mukulu bamupashiishe pa lusa lwaye. Tabadini sha sudi nya. Kubanga papa badyawuku'shi eshinda dya lukumiino tadibadya kwikala dibofule nya, anka bawukanga'shi Efile-Mukulu badyaa kumukwasha. mayi a Edisha kwadi « Ndayi na kufukama », abaadi mayi akukankamika. Binobino eena kufukama n'Efile-Mukulu – awuku Efile-Mukulu a kufukama, « Atumbikiibwe Efile-Mukulu na shaaye na Fumwetu Yesu Kilisto, Yaya a lusa lwibungi n'Efile-Mukulu a busambi booso ». (Bena Kolente 1:3)

(Mbyalulwe mu Kisongye kwi bakwetu bano : Arthur NYINDU ASSANI, na Benjamin KAPEPULA NKONGOLO, mu Kabinda mu kipwa kya 2024, mweshi wa kasatu).

© C.E.R.S. - B.P. 1673 Kananga  
République Démocratique Du Congo  
Email: 33eme.cers.lit@gmail.com  
<http://www.33eme-cers.org/>

## KA MPIKA KABAKASHI KA BEENA ISALELE



## KA MPIKA KABAKASHI KA BEENA ISALELE

«Bibumbu bya beena Sudiya bibayiile munkatukana ngoshi, na babakwatshile ka songwakashi ka mu senga ya Isalele bu musungi, ka baadi keena mufubo ka mukashi a Namana » (2 Bafumu 5:2). Namana, mukata a bibumbu bya ngoshi bya Fumu a beena Sudiya, baadi na kusepeela mu kaa kabaadi nako mwi fumw'aye, anka yawa muntu baadi kinkome na mupasukye, baadi na sudi.

Tatuwuku eshina dya kano kasongwakashi nya anka kabaadi na kitelulwilo ki buwa mu lutshi lwa ka mufubi kabakashi kakinga k'Efile-Mukulu mu shibo mu baakadi bupika. «Na kabalungwile Fumwako mukashi'shi : Aee ! su Fumwami badya kwikala mbwipi mwa mutemuki e ku Samadiya, Mutemuki badyaa kumupaasha ku mukumbo waye wa sudi ! ». (2 Bafumu 5:3). Kyakya kibaadi mwakule kibaadi kikuminiibwe kwi Fumwa'ye mukashi.

« Namana bafikile na mpunda yaye na ngolofwanda, na bayimeene pa kibelo kya shibo ya Edisha. Edisha batumine mukyendji kwadi bwa kumulungula'shi : nda, na okeyine misango musambobidi mu yundana ; mbidi yooobe ayikalukuula kalolo [senuu], na okasuluka. Namana bafitshile munda, na bayile, na kwamba'shi : talanga, nesambishanga'shi : Akatuuka kwandji, nabeene akelubula, akayitanyina eshina dya Ayikalayika, Efile-Mukulu aaye, akababaasha eyaasa dyaye pe mukumbo na akapaasha sha sudi. Myela ikakata yaku Damase, Abana na Palapala, tayi buuwa bu meema ooso a mu Isalele nya ? Ntshi bya kwimwitumpa na selele nya ? Na balukiile na kwenda na sungu. Anka beena mudimo baaye babesesele pepi naaye bwa kumulungula'shi : Yaya, su mutemuki badya kukuteka kukita mwanda wi bukopo, tabodya kwiwukita nya ? akyosho kukitshiina bino bibakwamba'shi eyine na okekala musulukye nkini ! Byabya balalele na bakeyiine misango musambobidi mu yundana, muyiile eyi dya muntu'Efile-Mukulu ; na mbidi yaye ibalukiile nka bu mbidi ya kaana kakinga, na bekelele musulukye. Namana balukiile kwi muntu'Efile-Mukulu, na booso babaadi nabo. Pabafikile, bayimeene kumpala kwaye, na bambile'shi : talanga, nashinguula'shi pa senga yoooso ishima ta pe Efile-Mukulu nya, kukaasha'nka mu Isalele. Na binobino kumiina, nankusendeela, bweedi bwa mufubi oobe. Edisha balulwile'shi : Ayikalayika andji mwikale mufubi aaye eena muwa ! Ntaana nkumiine. Namana bamukonkomekyele byadyaa

## KA MPIKA KABAKASHI KA BEENA ISALELE

«Bibumbu bya beena Sudiya bibayiile munkatukana ngoshi, na babakwatshile ka songwakashi ka mu senga ya Isalele bu musungi, ka baadi keena mufubo ka mukashi a Namana » (2 Bafumu 5:2). Namana, mukata a bibumbu bya ngoshi bya Fumu a beena Sudiya, baadi na kusepeela mu kaa kabaadi nako mwi fumw'aye, anka yawa muntu baadi kinkome na mupasukye, baadi na sudi.

Tatuwuku eshina dya kano kasongwakashi nya anka kabaadi na kitelulwilo ki buwa mu lutshi lwa ka mufubi kabakashi kakinga k'Efile-Mukulu mu shibo mu baakadi bupika. «Na kabalungwile Fumwako mukashi'shi : Aee ! su Fumwami badya kwikala mbwipi mwa mutemuki e ku Samadiya, Mutemuki badyaa kumupaasha ku mukumbo waye wa sudi ! ». (2 Bafumu 5:3). Kyakya kibaadi mwakule kibaadi kikuminiibwe kwi Fumwa'ye mukashi.

« Namana bafikile na mpunda yaye na ngolofwanda, na bayimeene pa kibelo kya shibo ya Edisha. Edisha batumine mukyendji kwadi bwa kumulungula'shi : nda, na okeyine misango musambobidi mu yundana ; mbidi yooobe ayikalukuula kalolo [senuu], na okasuluka. Namana bafitshile munda, na bayile, na kwamba'shi : talanga, nesambishanga'shi : Akatuuka kwandji, nabeene akelubula, akayitanyina eshina dya Ayikalayika, Efile-Mukulu aaye, akababaasha eyaasa dyaye pe mukumbo na akapaasha sha sudi. Myela ikakata yaku Damase, Abana na Palapala, tayi buuwa bu meema ooso a mu Isalele nya ? Ntshi bya kwimwitumpa na selele nya ? Na balukiile na kwenda na sungu. Anka beena mudimo baaye babesesele pepi naaye bwa kumulungula'shi : Yaya, su mutemuki badya kukuteka kukita mwanda wi bukopo, tabodya kwiwukita nya ? akyosho kukitshiina bino bibakwamba'shi eyine na okekala musulukye nkini ! Byabya balalele na bakeyiine misango musambobidi mu yundana, muyiile eyi dya muntu'Efile-Mukulu ; na mbidi yaye ibalukiile nka bu mbidi ya kaana kakinga, na bekelele musulukye. Namana balukiile kwi muntu'Efile-Mukulu, na booso babaadi nabo. Pabafikile, bayimeene kumpala kwaye, na bambile'shi : talanga, nashinguula'shi pa senga yoooso ishima ta pe Efile-Mukulu nya, kukaasha'nka mu Isalele. Na binobino kumiina, nankusendeela, bweedi bwa mufubi oobe. Edisha balulwile'shi : Ayikalayika andji mwikale mufubi aaye eena muwa ! Ntaana nkumiine. Namana bamukonkomekyele byadyaa

kukumiina, anka aye bapeele. Byabya Namana bambile'shi : pamwanda bopele, tumanga eyi bape mufubi oobe kipese kya senga, na bushito bwa mile (nyema ya kusemuna mashito) ibidi ; mwanda mufubi oobe takyebe kulambula bangi b'efile sungwa mulambu wa kushiika kalo sunga kitapilo nya, akalambula'nka Ayikalayika ». (2 Bafumu 5:9-17)

### Namana baadi abengakana meema a yundana

Pababalungwile Namana kwi Edisha'shi, nda, okeyine misango musambobidi mu Yundana Namana bafitshile munda. Bakwile'shi : « Myeela yikata yaku Damase, Abana na Palapala, tayibuwa na'yo bu meema a mu Isalele nya ? » Lelo, bantu bebungi bakweete kupela eshinda dya kipandjilo ki'Efile-Mukulu. Esambi adyamba'shi : « Mwanda eyi dya nkuluse di bu moombe kwi baaba abashimina, anka kwi'twe abapete kipandjilo ni mbukome bw'Efile-Mukulu ». (1 Bena Kolente 1:18)

Lelo kwi manga ebya kupaasha sudi, anka kala, kwikala na sudi bibaadi bu mwanda ukididiile bukata. Mulwisho mu myuwa yetu ni mwanda ukididiile bukata na'yo. Esambi adyamba'shi : « Mwanda efuto dya ubi, ni ndufu ; anka buntu bwa lusa lw'Efile-Mukulu, ni muwa wa yikalayika mu Kilisto Yesu fumwetu ». (Looma 6:23)

### Bafubi ba namana abamupa malango eena binangu

Bafubi ba Namana pababamulungwile'shi : « Su mutemuki badyaa kukuteka kukita mwanda ukile bukata, tabodyaa kwiwukita'be ? Akyoshi bya kukita kyakya kibakwamba'shi : keyine na okasuluka nkini ! » (2 Bafumu 5:13,14). Bebapushishe, na bakeyiine bu bibamulungwile Edisha. Namana bapandjile ku maladi a sudi yaye. Fumu Ndafidi batekyele'shi : « Aee ! Efile-Mukulu Fwile namu lusa mu kalolo koobe ; muyiile lusa loobe lukata, shimisha bilubilo byande ; nsule ontooshe ku milwisho yande, na ntooshe ku mulwisho wande. Ntumpe, na nankekala selelee kukila mulemba ». (Ngono 51:1,2,7)

Mukandu wa mukandu wi buwa awamba'shi, « Elangye'yi, na kumiinayi mukandu wi buwa ». (Maako 1:15)

### Edisha tabadyaa kukumiina bweedi bwa Namana nyaa

Pabapandjile Namana, balambwiile Edisha mulambu, anka Edisha balulwile'shi : « Ayikalayika andji mwikale mufubi aaye eena muwa ! Ntshi

kukumiina, anka aye bapeele. Byabya Namana bambile'shi : pamwanda bopele, tumanga eyi bape mufubi oobe kipese kya senga, na bushito bwa mile (nyema ya kusemuna mashito) ibidi ; mwanda mufubi oobe takyebe kulambula bangi b'efile sungwa mulambu wa kushiika kalo sunga kitapilo nya, akalambula'nka Ayikalayika ». (2 Bafumu 5:9-17)

### Namana baadi abengakana meema a yundana

Pababalungwile Namana kwi Edisha'shi, nda, okeyine misango musambobidi mu Yundana Namana bafitshile munda. Bakwile'shi : « Myeela yikata yaku Damase, Abana na Palapala, tayibuwa na'yo bu meema a mu Isalele nya ? » Lelo, bantu bebungi bakweete kupela eshinda dya kipandjilo ki'Efile-Mukulu. Esambi adyamba'shi : « Mwanda eyi dya nkuluse di bu moombe kwi baaba abashimina, anka kwi'twe abapete kipandjilo ni mbukome bw'Efile-Mukulu ». (1 Bena Kolente 1:18)

Lelo kwi manga ebya kupaasha sudi, anka kala, kwikala na sudi bibaadi bu mwanda ukididiile bukata. Mulwisho mu myuwa yetu ni mwanda ukididiile bukata na'yo. Esambi adyamba'shi : « Mwanda efuto dya ubi, ni ndufu ; anka buntu bwa lusa lw'Efile-Mukulu, ni muwa wa yikalayika mu Kilisto Yesu fumwetu ». (Looma 6:23)

### Bafubi ba namana abamupa malango eena binangu

Bafubi ba Namana pababamulungwile'shi : « Su mutemuki badyaa kukuteka kukita mwanda ukile bukata, tabodyaa kwiwukita'be ? Akyoshi bya kukita kyakya kibakwamba'shi : keyine na okasuluka nkini ! » (2 Bafumu 5:13,14). Bebapushishe, na bakeyiine bu bibamulungwile Edisha. Namana bapandjile ku maladi a sudi yaye. Fumu Ndafidi batekyele'shi : « Aee ! Efile-Mukulu Fwile namu lusa mu kalolo koobe ; muyiile lusa loobe lukata, shimisha bilubilo byande ; nsule ontooshe ku milwisho yande, na ntooshe ku mulwisho wande. Ntumpe, na nankekala selelee kukila mulemba ». (Ngono 51:1,2,7)

Mukandu wa mukandu wi buwa awamba'shi, « Elangye'yi, na kumiinayi mukandu wi buwa ». (Maako 1:15)

### Edisha tabadyaa kukumiina bweedi bwa Namana nyaa

Pabapandjile Namana, balambwiile Edisha mulambu, anka Edisha balulwile'shi : « Ayikalayika andji mwikale mufubi aaye eena muwa ! Ntshi