

basangelanaki mbo, One ale bokitshwa, lontshokoko toodjaki, ko bokitshwa bokoyala bondiso. Iyo andokandaki, andodjakaki, andoushaki ma isala. Sheleko ekokela nkolo ya isala? Andi aokoyaka, aokodjaka bankambi aiko, aokokaya bankambi bankina disala. Inyo lotatoli djoji ine n'onkanda bona Nkumundjeyi?

Diyoko iki bashumyi anda lodu atonaka
Dine imbilama nd'otsha on'intshungu,
Ayadiako aokela shene,
Diyadi djoji inda diphepha nd'aisho andiso.

(Mateu 21:33-43)

Waphemelo Bonda Loola

Sheko, waphemelo bonda loola bokoyala shenda tophukphu tond'aimato bonkama batopheyana l'ele, bakolaki benoyi endiyo diyophomana la bosongi onda wadi. Batano andiyo baki tshwetetshi, batano baki la mpima. Aki tshwetetshi bakolaki benoyi endiyo batokola nsadi, aye baiko baki la mpima baokola nsadi d'iyoyi nda tompuki tondiyo, o la benoyi endiyo. Aki bosongi onda wadi wengengwaka, tophukphu tosoko touma baolok'aisho tolo, baoletama ilo. Nd'akole, baolemwa mbo, Bosongi onda wadi an'one aoyaka; lokendaka diyophomana l'andi. Ko tophukphu tosoko touma toletshwa, baolangola diphetsa benoyi endiyo. Tshwetetshi baosangela asi mpima mbo, Lotokaaki empudi ena nsadi eninyo djoji inda benoyi endiso easa diphopha. Aye basi mpima baoluteya djoji mbo, Nsadi ephokoki ed'isho la ed'inyo iyee. Lokendaka ele baiko basombya nsadi, losombaka inyo munge med'iyoyi. Akiyo akendaka diyosomba nsadi, bosongi onda wadi aokundjwa. Ko baiko baokoka yamana l'andi baolotshwa l'andi nd'ilambo inda diyala; la baodipha lokoki. Nd'okongo, tophukphu tonkina tosoko baoyaka, basanga mbo, Nkumue, Nkumue otodiphole; aye and'aolamba mbo, Soosolo, nsholosangela ayemi, Emi mpoleyi. Sheko, loyalaka la bolakwa djoji inda lopheyi wina nkula etamba.

(Mateu 25:1-13)

© C.E.R.S. - B.P. 1673 Kananga

République Démocratique Du Congo

Email: 33eme.cers.lit@gmail.com

<http://www.33eme-cers.org/>

basangelanaki mbo, One ale bokitshwa, lontshokoko toodjaki, ko bokitshwa bokoyala bondiso. Iyo andokandaki, andodjakaki, andoushaki ma isala. Sheleko ekokela nkolo ya isala? Andi aokoyaka, aokodjaka bankambi aiko, aokokaya bankambi bankina disala. Inyo lotatoli djoji ine n'onkanda bona Nkumundjeyi?

Diyoko iki bashumyi anda lodu atonaka
Dine imbilama nd'otsha on'intshungu,
Ayadiako aokela shene,
Diyadi djoji inda diphepha nd'aisho andiso.

(Mateu 21:33-43)

Waphemelo Bonda Loola

Sheko, waphemelo bonda loola bokoyala shenda tophukphu tond'aimato bonkama batopheyana l'ele, bakolaki benoyi endiyo diyophomana la bosongi onda wadi. Batano andiyo baki tshwetetshi, batano baki la mpima. Aki tshwetetshi bakolaki benoyi endiyo batokola nsadi, aye baiko baki la mpima baokola nsadi d'iyoyi nda tompuki tondiyo, o la benoyi endiyo. Aki bosongi onda wadi wengengwaka, tophukphu tosoko touma baolok'aisho tolo, baoletama ilo. Nd'akole, baolemwa mbo, Bosongi onda wadi an'one aoyaka; lokendaka diyophomana l'andi. Ko tophukphu tosoko touma toletshwa, baolangola diphetsa benoyi endiyo. Tshwetetshi baosangela asi mpima mbo, Lotokaaki empudi ena nsadi eninyo djoji inda benoyi endiso easa diphopha. Aye basi mpima baoluteya djoji mbo, Nsadi ephokoki ed'isho la ed'inyo iyee. Lokendaka ele baiko basombya nsadi, losombaka inyo munge med'iyoyi. Akiyo akendaka diyosomba nsadi, bosongi onda wadi aokundjwa. Ko baiko baokoka yamana l'andi baolotshwa l'andi nd'ilambo inda diyala; la baodipha lokoki. Nd'okongo, tophukphu tonkina tosoko baoyaka, basanga mbo, Nkumue, Nkumue otodiphole; aye and'aolamba mbo, Soosolo, nsholosangela ayemi, Emi mpoleyi. Sheko, loyalaka la bolakwa djoji inda lopheyi wina nkula etamba.

(Mateu 25:1-13)

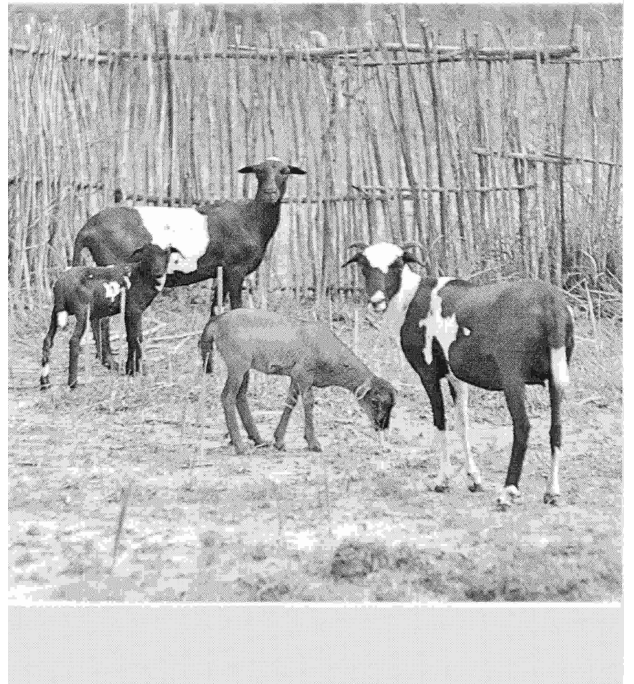
© C.E.R.S. - B.P. 1673 Kananga

République Démocratique Du Congo

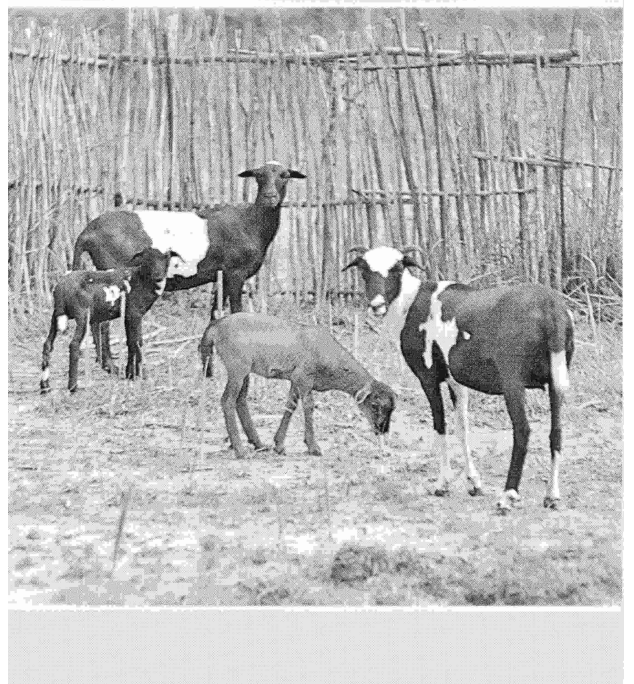
Email: 33eme.cers.lit@gmail.com

<http://www.33eme-cers.org/>

Shawu Ina Nkumu Yeso



Shawu Ina Nkumu Yeso



Bonkoko Bolungusana

Yeso ondatelaki nshawu ene ayandi: Bonto onkono on'inyo ale la enkoko boni, nkina bomodi bond'eko bolungusana, aphotshiki benkama ibvwa la ibvwa nd'oshwe inda diyasa oko bolungusana, elengi ndi anoenal'andi? Ko anoenal'andi, and'aokoaphya nd'ashoko banandi la boshadu. Andutal'andi okandi andi aoketalo tosoke tonandi l'atshutshi, ayandi, Losalanganaka l'emi d'joi in'emi ndolena bonkoko bonami bolungusanaki. Nsholosangela ayemi, O shiko baokoshashala nda loola l'oloko bon'onto ophoko bon'ombe bokalangany'otema, bolekola bon'anto benkama ibvwa la ibvwa baphosambi dikalangany'etema.

Mpata Enda Iphesa Etshwaki

Nkina bomoto bondokatshi mpata inda iphesa bonkama nkin'andi aokotshweya emodi, aphophetshi itshwa, ko aphombi lodu, aphasi la itshidi elengi ndi andisholandi mpata esoko. Anoenal'andi, andi aoketalo tosoke tonandi l'atshutshi mbo, Losalanganaka l'emi l'olok'on'emi ndolishola mpata enami etshwaki. Nsholosangela mbo, O shiko andjelo bana Nkumundjeyi baokoshashala l'olok'onda bont'on'ombe bophoko bokalangany'otema. (Luka 15:3-10)

Bon'onda Dwele Bophitanaki

L'andi osangaki ayandi, Bonto omodi oki la ban'and'ele baphe. Ko wankune ondiyo aolotsha ishe mbo, Apha, onkaaki empudi end'okitshwa bokambalom'emi. Sheko andi ondakaphelaki bokitshwa. Ko betsho lako elengi nd'okongo, wankune on'ana aotakanya baomba, aokenda lokendo na motshi end'etali. And'aotshangola baomba banandi mpiko l'aoi banda ephitanelo. Akiandi alekyaka bakuta banandi bankumela, ndjala en'onene ekitelaki na motshi eiko l'andi aolangola yelengana la toma. Ko andi aosambya esambi la dwele omodi onda iyekela iko ina andi diyolesha nsumbu. Ko andi olangaki mbo, Nkina ndokokindja dikundju la mposo iki nsumbu aleki. Ko lako onto ondokaaki emba enda ila. Aye akiandi wutaka dikanedy mpima andi osangaki ayandi, Bas'olimo band'apha baiko bayadi dileki toma bomaka o la ndekola, ko emi nshowa ane la ndjala. Ndokudwa, ndokuta el'apha, ndokoosangela ayemi, Apha, ndokel'ombe nd'os'onda loola o la nda aisho bandawe; mpokatshi olotshi ina emi ditangama mbo, Bon'ondawe onda dwele. Onkeli nga bonkambi bondawe omodi. L'andi aolemala, aoyaka el'ishe. Ko akiandi ayakaka nd'itatali ishe aolena, aolokesela, aoluta, aolokwela na nkingu, aolomana la andi berumvu. Bona ondosangelaki ayandi, Aphe, nshoke l'ombe nd'os'onda loola o la nd'aisho

Bonkoko Bolungusana

Yeso ondatelaki nshawu ene ayandi: Bonto onkono on'inyo ale la enkoko boni, nkina bomodi bond'eko bolungusana, aphotshiki benkama ibvwa la ibvwa nd'oshwe inda diyasa oko bolungusana, elengi ndi anoenal'andi? Ko anoenal'andi, and'aokoaphya nd'ashoko banandi la boshadu. Andutal'andi okandi andi aoketalo tosoke tonandi l'atshutshi, ayandi, Losalanganaka l'emi d'joi in'emi ndolena bonkoko bonami bolungusanaki. Nsholosangela ayemi, O shiko baokoshashala nda loola l'oloko bon'onto ophoko bon'ombe bokalangany'otema, bolekola bon'anto benkama ibvwa la ibvwa baphosambi dikalangany'etema.

Mpata Enda Iphesa Etshwaki

Nkina bomoto bondokatshi mpata inda iphesa bonkama nkin'andi aokotshweya emodi, aphophetshi itshwa, ko aphombi lodu, aphasi la itshidi elengi ndi andisholandi mpata esoko. Anoenal'andi, andi aoketalo tosoke tonandi l'atshutshi mbo, Losalanganaka l'emi l'olok'on'emi ndolishola mpata enami etshwaki. Nsholosangela mbo, O shiko andjelo bana Nkumundjeyi baokoshashala l'olok'onda bont'on'ombe bophoko bokalangany'otema. (Luka 15:3-10)

Bon'onda Dwele Bophitanaki

L'andi osangaki ayandi, Bonto omodi oki la ban'and'ele baphe. Ko wankune ondiyo aolotsha ishe mbo, Apha, onkaaki empudi end'okitshwa bokambalom'emi. Sheko andi ondakaphelaki bokitshwa. Ko betsho lako elengi nd'okongo, wankune on'ana aotakanya baomba, aokenda lokendo na motshi end'etali. And'aotshangola baomba banandi mpiko l'aoi banda ephitanelo. Akiandi alekyaka bakuta banandi bankumela, ndjala en'onene ekitelaki na motshi eiko l'andi aolangola yelengana la toma. Ko andi aosambya esambi la dwele omodi onda iyekela iko ina andi diyolesha nsumbu. Ko andi olangaki mbo, Nkina ndokokindja dikundju la mposo iki nsumbu aleki. Ko lako onto ondokaaki emba enda ila. Aye akiandi wutaka dikanedy mpima andi osangaki ayandi, Bas'olimo band'apha baiko bayadi dileki toma bomaka o la ndekola, ko emi nshowa ane la ndjala. Ndokudwa, ndokuta el'apha, ndokoosangela ayemi, Apha, ndokel'ombe nd'os'onda loola o la nda aisho bandawe; mpokatshi olotshi ina emi ditangama mbo, Bon'ondawe onda dwele. Onkeli nga bonkambi bondawe omodi. L'andi aolemala, aoyaka el'ishe. Ko akiandi ayakaka nd'itatali ishe aolena, aolokesela, aoluta, aolokwela na nkingu, aolomana la andi berumvu. Bona ondosangelaki ayandi, Aphe, nshoke l'ombe nd'os'onda loola o la nd'aisho

bandawe, mpokatshi olotshi onda ditangama mbo, Bon'onawe onda dwele. Aye ishe osangelaki bankambi banandi ayandi, Lodyaka etoo enda itou elekola olotshi, lotshak'andi l'eko; ko lilaka o la lophete nd'oshai onandi la sabata nd'ekolo enandi. Loyelaka iyana ina ngombe inda diongo, lodjakak'iko, toleki, tosalangani; d'joi inda onandi munge, alokwodya nda yika; and'otshweki ko aoluta yenya. Ko baolangana dishashala.

(Luka 15:11-24)

Bosi Samalia Bonda Ishei

Yeso osangaki ayandi, Bonto omodi okitelaki ma Yelushalema nda Yeleko l'andi aokomana la baiyi banda toma, la iyo baososola itoo inandi, baolokota mpota, baokenda, baolotshika asa diwa. Ko botshedi okendaki okiakenda na mboka eiko, l'akiandi wenak'andi, and'aophengola nda wudi onkina. O la bosu Lewi phyophyo, akiandi akundjwaka mpiko, aoyaka diyophala, aophengola nda wudi onkina. Aye bosu Samaliya omodi akiandi akendaka, oyakaki mpen'ekiandi wetamaka; akiandi wenak'andi, and'aolook'ishei; aokenda el'andi, aolomba mpota inandi la itoo, aoluteya nsadi l'aana nkoko; aolaphya na mpunda enandi munge, alokwodya nda lodu lond'aphaya, aolesanya. Na nkesa, akiandi akendaka, andi aolodya mpata iphe, aokaya nkolo ya lodu, la andi ondosangelaki ayandi, Phalak'andi olotshi, ko andutalom'emi ndokokuteya bosolo boumela bolekyawe d'joi inandi. Nd'atei anda iy'asato, onkono oki shenda botshutshi el'onto ondokomanaki la baiyi? Andi aoluteya d'joi mbo, Ko boiko ondookaki ishei. Sheko Yeso ondosangelaki ayandi, Kendaka we, kelaka nko shiko.

(Luka 10:29-37)

Nkolo Ya Isala La Mamo Inandi

Yeso aolasangela nshawu ayandi, Bonto ononaki disala inda ekodi enda vinyo, la and'osamanyaki ikandu, otshimaki diphoko inda yama vinyo, ko andi oshumyaki lodu lond'otale londa ephalelo, otshikak'iko nd'akata ban'ankambi, okendaki na motshi enkina. Nd'etamba end'emukelo andi osokolaki bonkambi onandi omodi d'iyokola mamo inda isala m'ele bankambi. Ko iyo baolokanda, baolokphula, baoluteya mpampa. An'ondasokodyaki bontamba bonandi bonkina, ko iy'andokotaki nd'otsha, baolokelel'ombe. Ko andi osokolaki bomodi onkina la iyo baolodjaka; o l'ankina phala; iyo akphulaki amodi, la adjakaki ankina. Ko andi aki l'ona ophoka bonda lota oki andi alangaka, l'andi ondosokolaki ed'iyoo nd'okongo ayandi, Iyo baokophika bon'onami. Aye bankambi baiko

bandawe, mpokatshi olotshi onda ditangama mbo, Bon'onawe onda dwele. Aye ishe osangelaki bankambi banandi ayandi, Lodyaka etoo enda itou elekola olotshi, lotshak'andi l'eko; ko lilaka o la lophete nd'oshai onandi la sabata nd'ekolo enandi. Loyelaka iyana ina ngombe inda diongo, lodjakak'iko, toleki, tosalangani; d'joi inda onandi munge, alokwodya nda yika; and'otshweki ko aoluta yenya. Ko baolangana dishashala.

(Luka 15:11-24)

Bosi Samalia Bonda Ishei

Yeso osangaki ayandi, Bonto omodi okitelaki ma Yelushalema nda Yeleko l'andi aokomana la baiyi banda toma, la iyo baososola itoo inandi, baolokota mpota, baokenda, baolotshika asa diwa. Ko botshedi okendaki okiakenda na mboka eiko, l'akiandi wenak'andi, and'aophengola nda wudi onkina. O la bosu Lewi phyophyo, akiandi akundjwaka mpiko, aoyaka diyophala, aophengola nda wudi onkina. Aye bosu Samaliya omodi akiandi akendaka, oyakaki mpen'ekiandi wetamaka; akiandi wenak'andi, and'aolook'ishei; aokenda el'andi, aolomba mpota inandi la itoo, aoluteya nsadi l'aana nkoko; aolaphya na mpunda enandi munge, alokwodya nda lodu lond'aphaya, aolesanya. Na nkesa, akiandi akendaka, andi aolodya mpata iphe, aokaya nkolo ya lodu, la andi ondosangelaki ayandi, Phalak'andi olotshi, ko andutalom'emi ndokokuteya bosolo boumela bolekyawe d'joi inandi. Nd'atei anda iy'asato, onkono oki shenda botshutshi el'onto ondokomanaki la baiyi? Andi aoluteya d'joi mbo, Ko boiko ondookaki ishei. Sheko Yeso ondosangelaki ayandi, Kendaka we, kelaka nko shiko.

(Luka 10:29-37)

Nkolo Ya Isala La Mamo Inandi

Yeso aolasangela nshawu ayandi, Bonto ononaki disala inda ekodi enda vinyo, la and'osamanyaki ikandu, otshimaki diphoko inda yama vinyo, ko andi oshumyaki lodu lond'otale londa ephalelo, otshikak'iko nd'akata ban'ankambi, okendaki na motshi enkina. Nd'etamba end'emukelo andi osokolaki bonkambi onandi omodi d'iyokola mamo inda isala m'ele bankambi. Ko iyo baolokanda, baolokphula, baoluteya mpampa. An'ondasokodyaki bontamba bonandi bonkina, ko iy'andokotaki nd'otsha, baolokelel'ombe. Ko andi osokolaki bomodi onkina la iyo baolodjaka; o l'ankina phala; iyo akphulaki amodi, la adjakaki ankina. Ko andi aki l'ona ophoka bonda lota oki andi alangaka, l'andi ondosokolaki ed'iyoo nd'okongo ayandi, Iyo baokophika bon'onami. Aye bankambi baiko